


BATTLES AND LEADERS OF THE CIVIL WAR



BEING FOR THE MOST PART CONTRIBUTIONS
BY UNION AND CONFEDERATE OFFICERS.
BASED UPON "THE CENTURY WAR SERIES."
EDITED BY ROBERT UNDERWOOD JOHNSON
AND CLARENCE CLOUGH BUEL, OF THE EDI-
TORIAL STAFF OF "THE CENTURY MAGAZINE."

NEW-YORK
The Century Co.



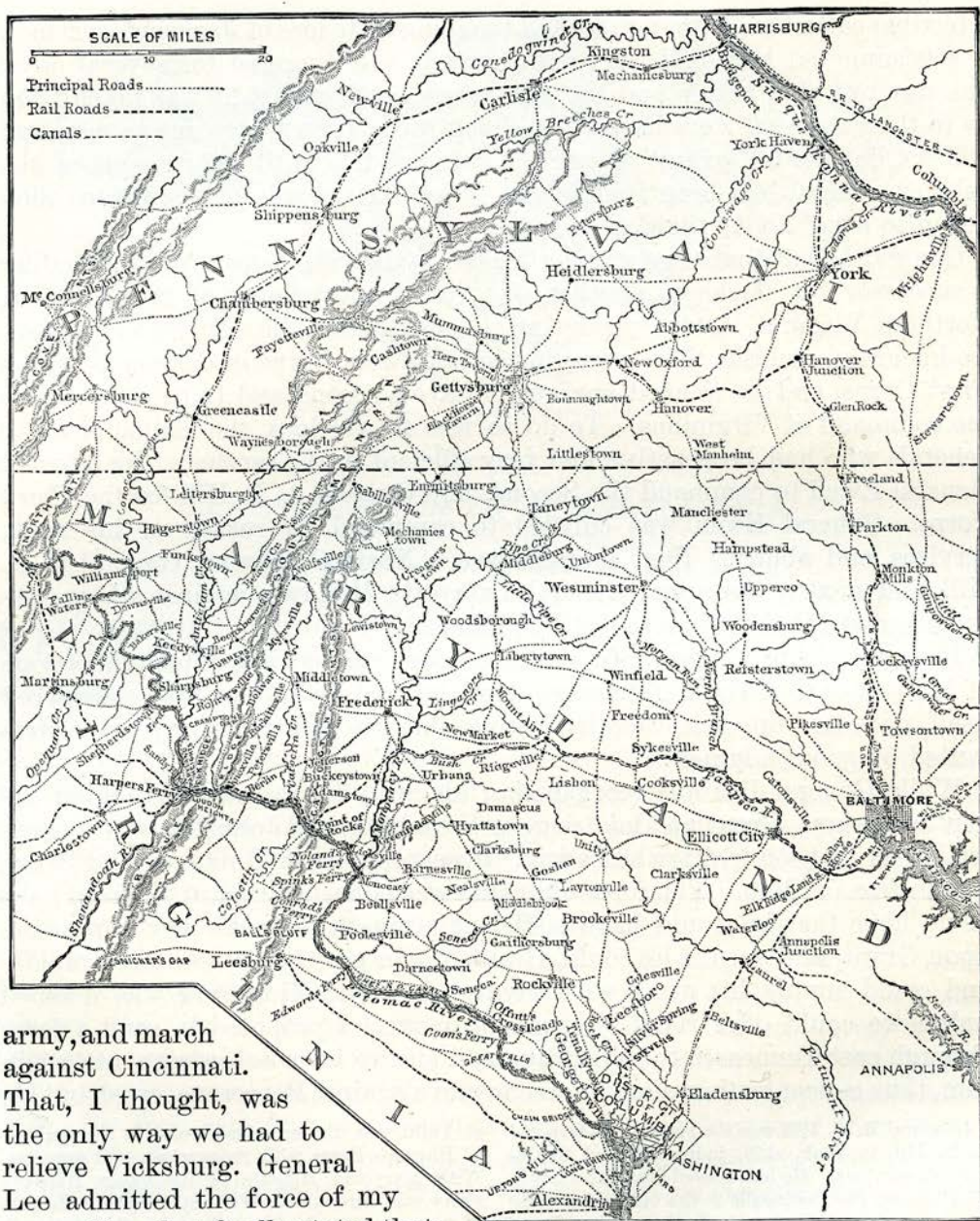
BREAKING UP THE UNION CAMP AT FALMOUTH. FROM A PHOTOGRAPH.



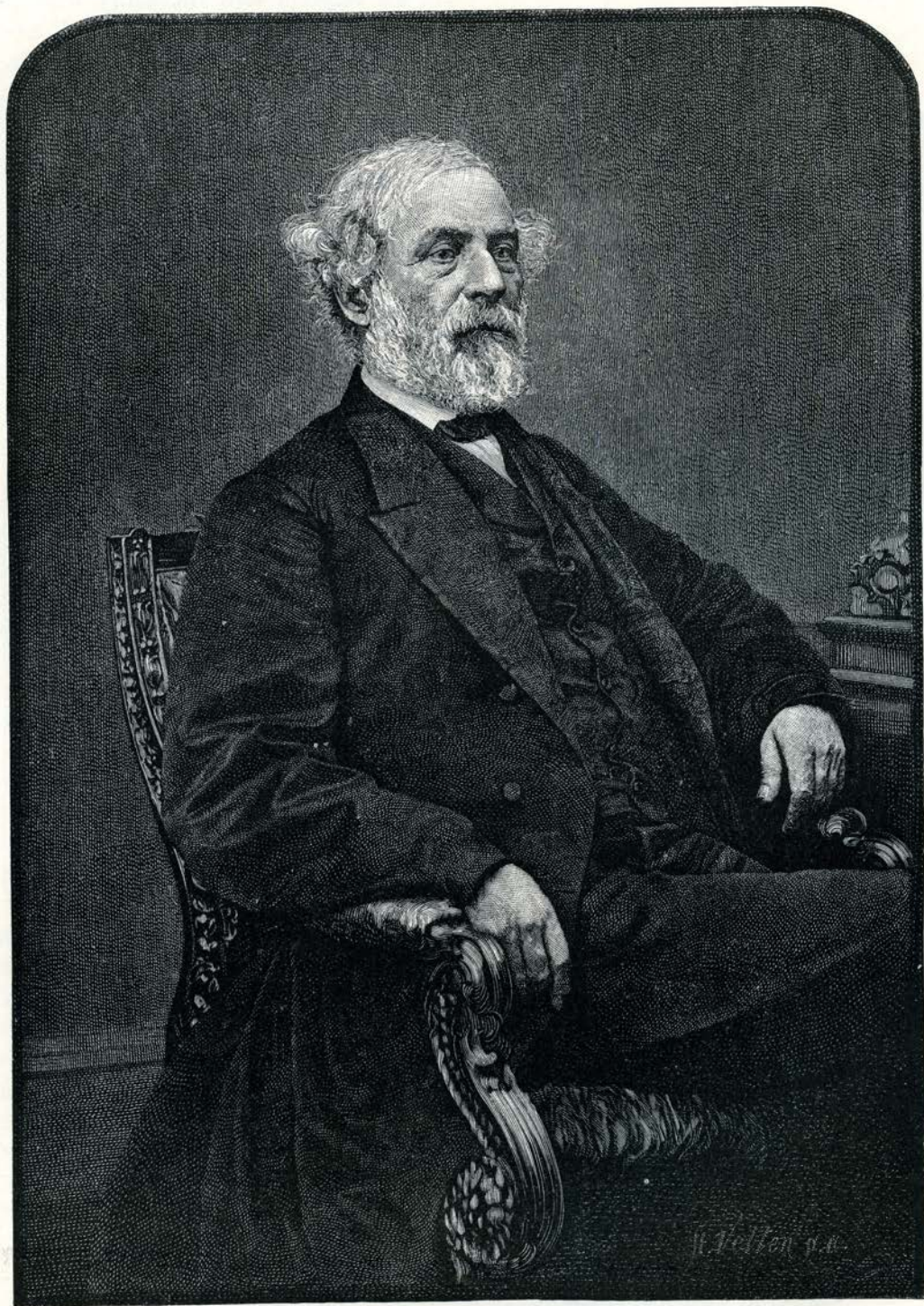
MAJOR-GENERAL GEORGE G. MEADE. FROM A PHOTOGRAPH.



UNION CAVALRY SCOUTING IN FRONT OF THE CONFEDERATE ADVANCE.



army, and march against Cincinnati. That, I thought, was the only way we had to relieve Vicksburg. General Lee admitted the force of my proposition, but finally stated that he preferred to organize a campaign

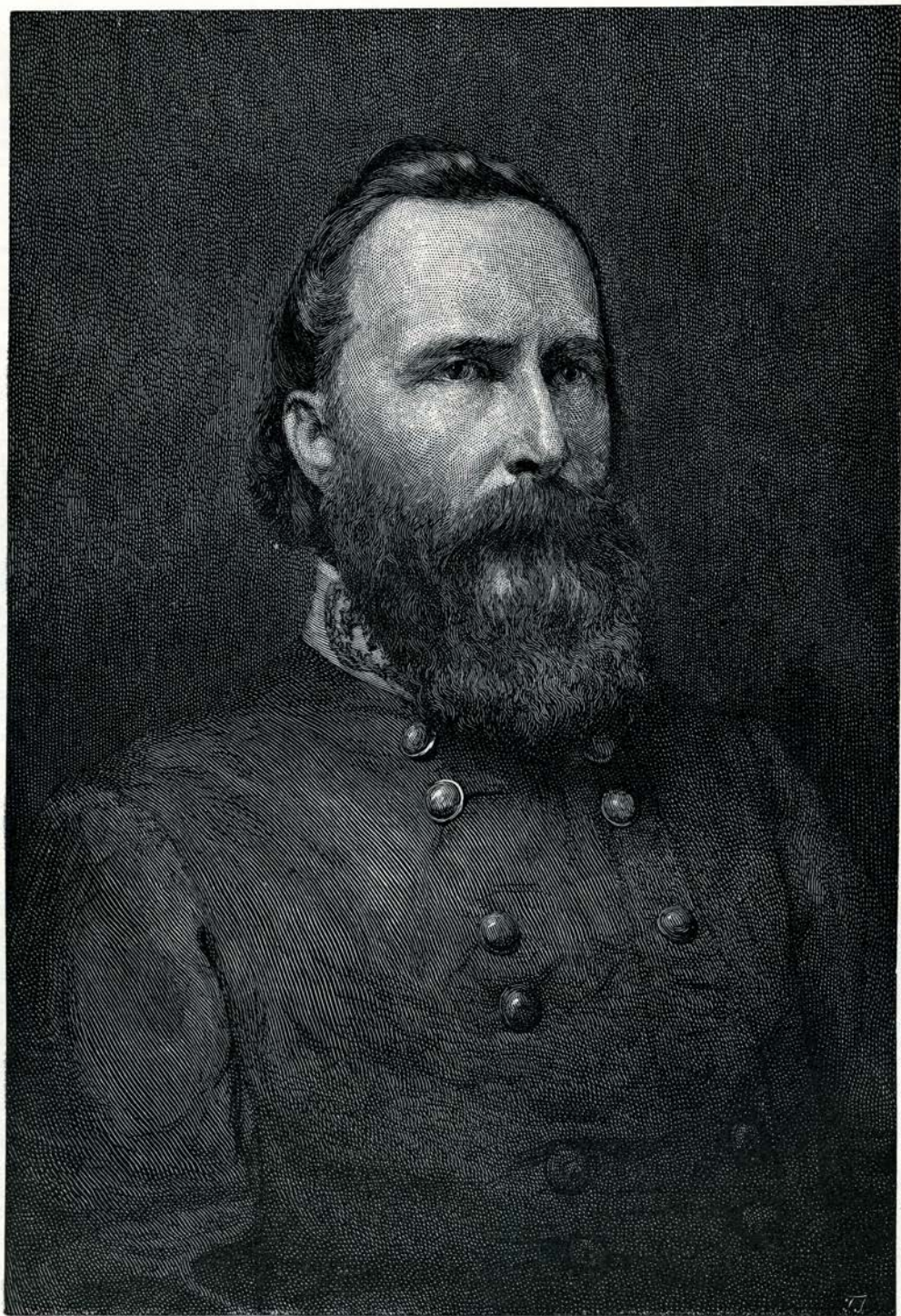


FROM A PHOTOGRAPH TAKEN AFTER THE WAR.

GENERAL ROBERT E. LEE.



CONFEDERATES AT A FORD.



James Longstreet



BUFORD'S CAVALRY OPPOSING THE
CONFEDERATE ADVANCE UPON GETTYSBURG.



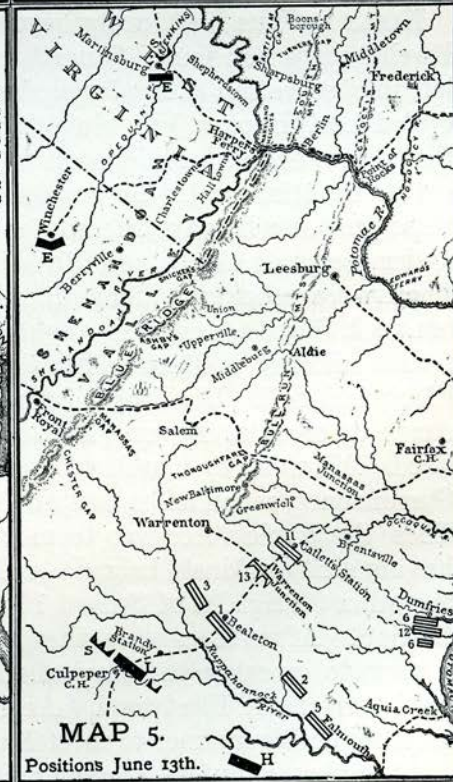
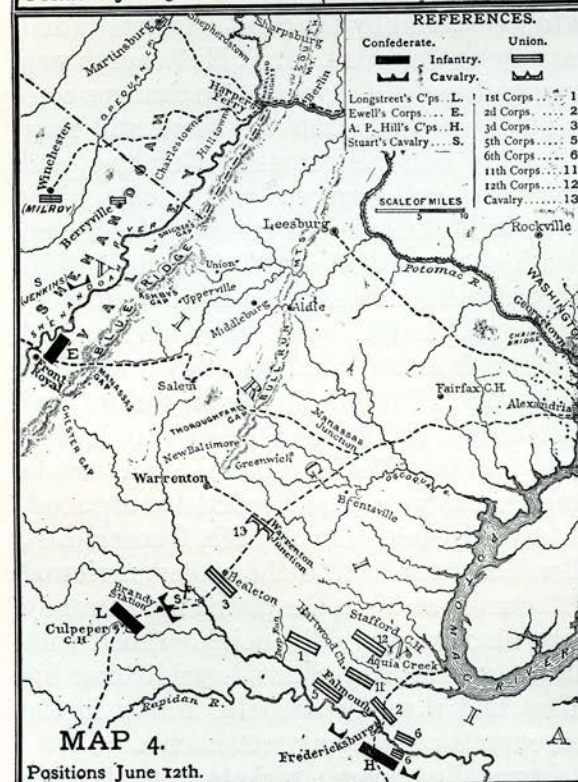
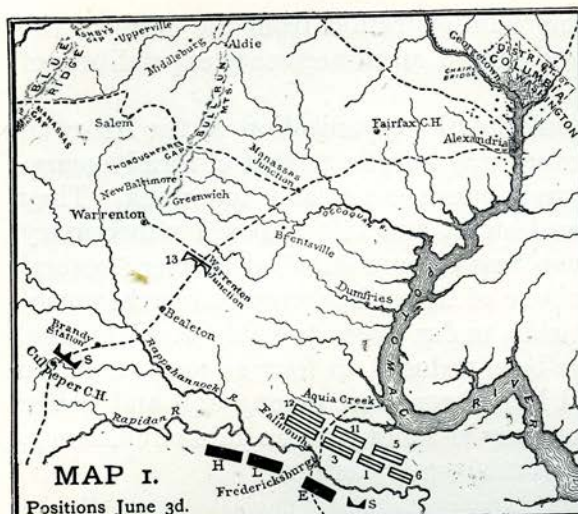
GENERAL MEADE IN THE FIELD.
FROM A PHOTOGRAPH.



FROM A PHOTOGRAPH.

MAJOR-GENERAL JOHN F. REYNOLDS.

The uniform is that of a field-officer in the regular infantry. Early in the war General Reynolds was Lieutenant-Colonel of the 14th United States Infantry, and was made Brigadier-General of Volunteers in September, 1861.—EDITORS.

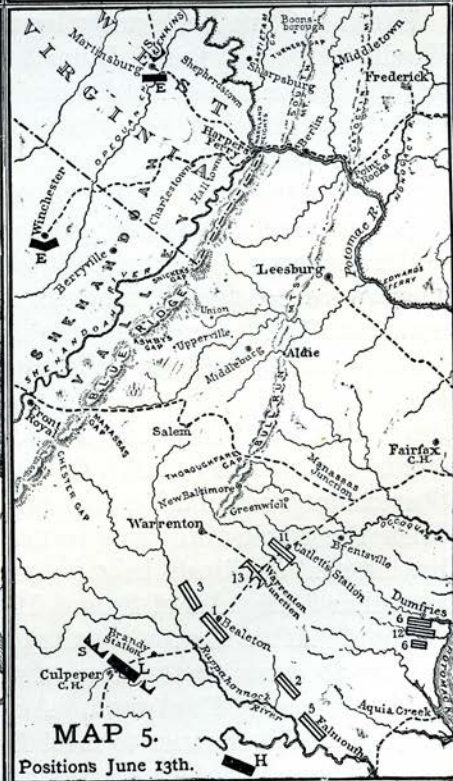
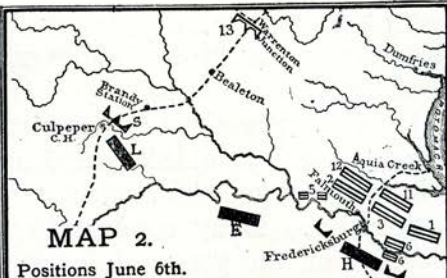
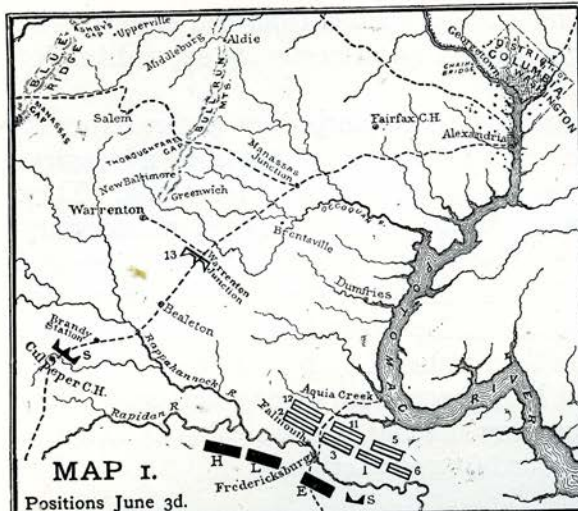


REFERENCES.

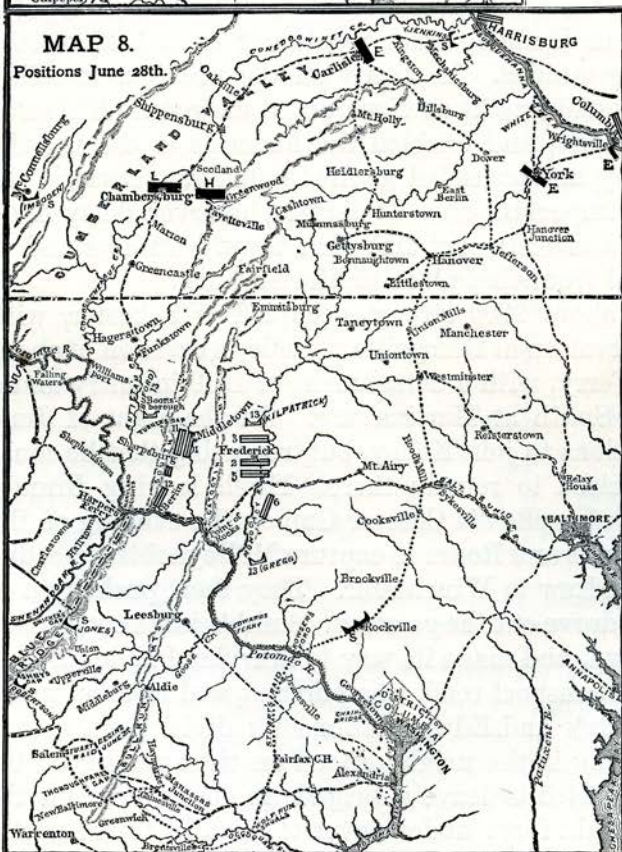
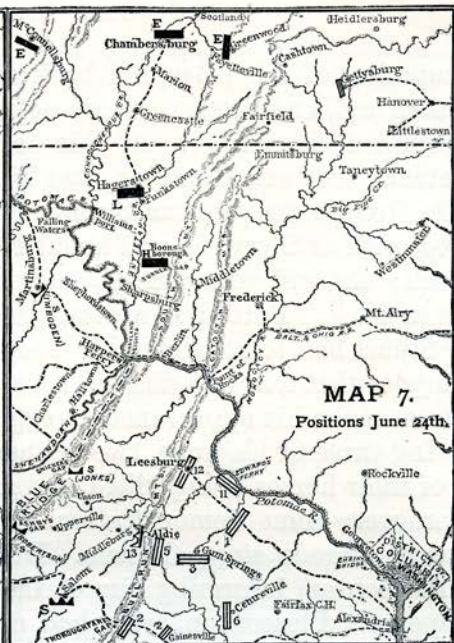
Confederate.	Union.
Infantry.	Infantry.
Cavalry.	Cavalry.
Longstreet's Corps L.	1st Corps 1
Ewell's Corps . . . E.	2d Corps 2
A. P. Hill's Corps . . H.	3d Corps 3
Stuart's Cavalry . . . S.	5th Corps 5
	6th Corps 6
	11th Corps 11
	12th Corps 12
	Cavalry 13

SCALE OF MILES

These maps and the others relating to the campaign and battle of Gettysburg are compilations by Abner Doubleday, Brevet Major-General, U. S. A., from the official reports of the commanders on both sides, and from the maps of Colonel John B. Bachelder, which were purchased by Congress for the War Department.—EDITORS.



These maps and the others relating to the campaign and battle of Gettysburg are compilations by Abner Doubleday, Brevet Major-General, U. S. A., from the official reports of the commanders on both sides, and from the maps of Colonel John B. Bachelder, which were purchased by Congress for the War Department.—EDITORS.



western side, and seize the outworks which commanded the main fort. He also ordered Johnson to deploy his division on the east of the town, so as to divert attention from Early. This was so successfully done that the latter placed, unperceived, twenty guns and an assaulting column in position, and at 6 p. m., by a sudden attack, carried the outworks, driving the garrisons into the body of the place. This capture was a complete surprise, and Milroy called a council of war, which decided on an immediate retreat, abandoning the artillery and wagons. Ewell had anticipated this, and ordered Johnson to occupy with a brigade a position on the Martinsburg pike, north of Winchester. The retreat commenced at

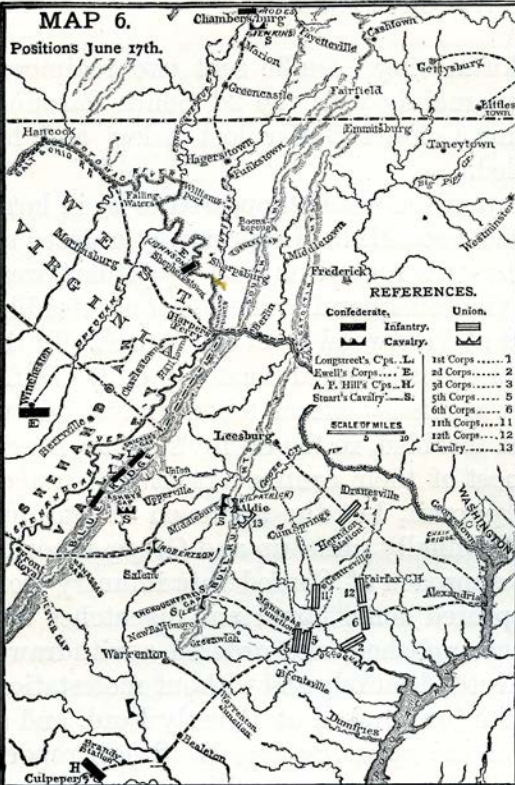
MAP 8.

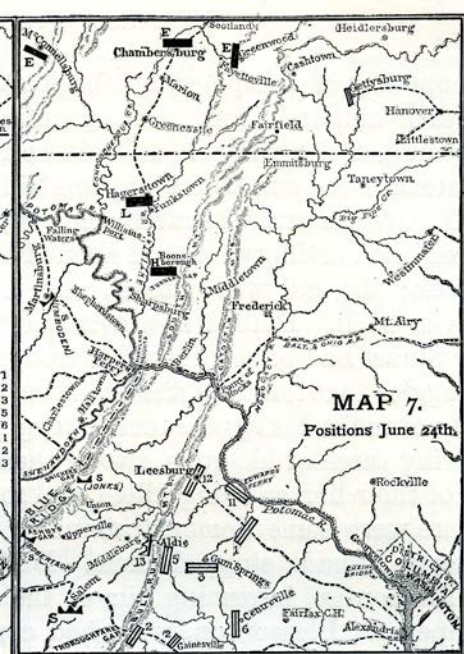
Positions June 28th.



MAP 6.

Positions June 17th.





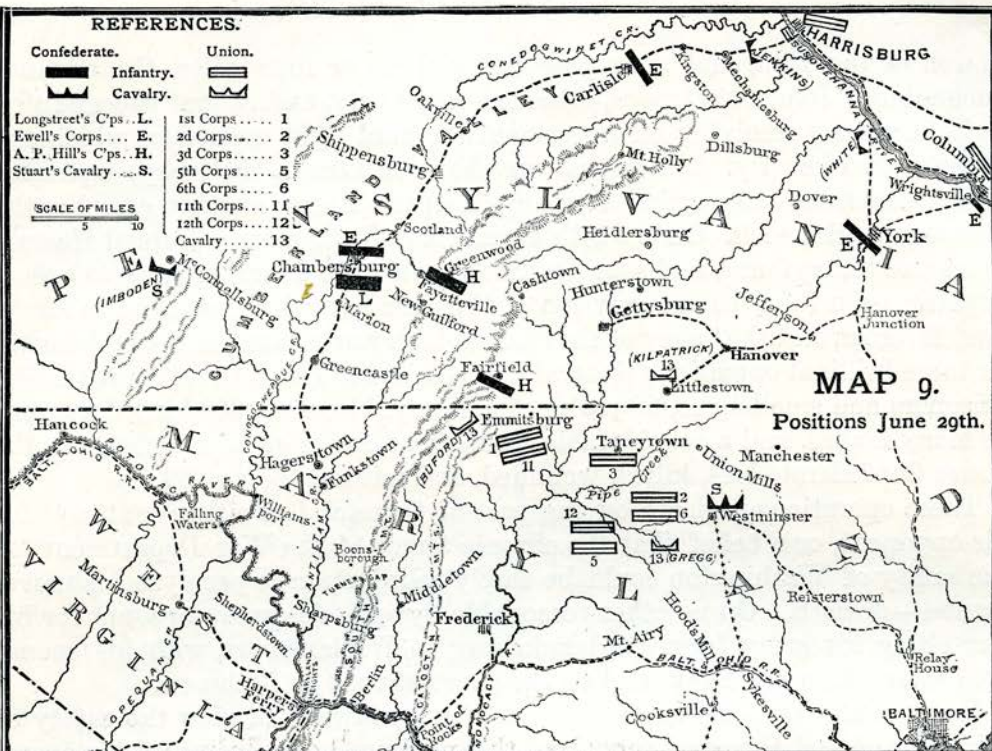
REFERENCES.

Confederate. Union.
 Infantry. Cavalry.

Longstreet's C's. L.
 Ewell's Corps. E.
 A. P. Hill's C's. H.
 Stuart's Cavalry S.

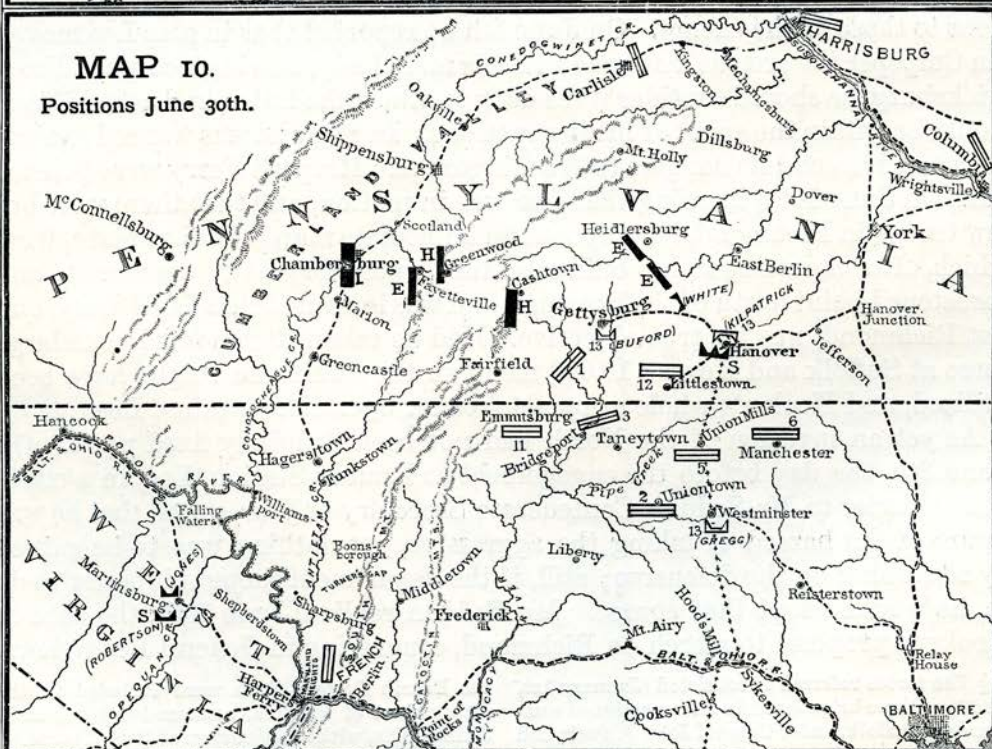
1st Corps. 1
 2d Corps. 2
 3d Corps. 3
 5th Corps. 5
 6th Corps. 6
 11th Corps. 11
 12th Corps. 12
 Cavalry. 13

SCALE OF MILES
 5 10



MAP 9.

Positions June 29th.

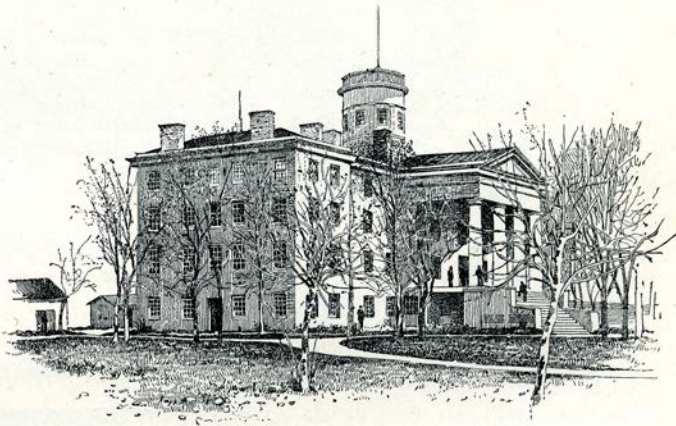


MAP 10.

Positions June 30th.

NOTE.—In considering the comparative value of Gettysburg and Westminster (behind Pipe Creek) to Lee and Meade, the maps, above, should make more of the mountain ridge, west of the Monocacy, and defined in

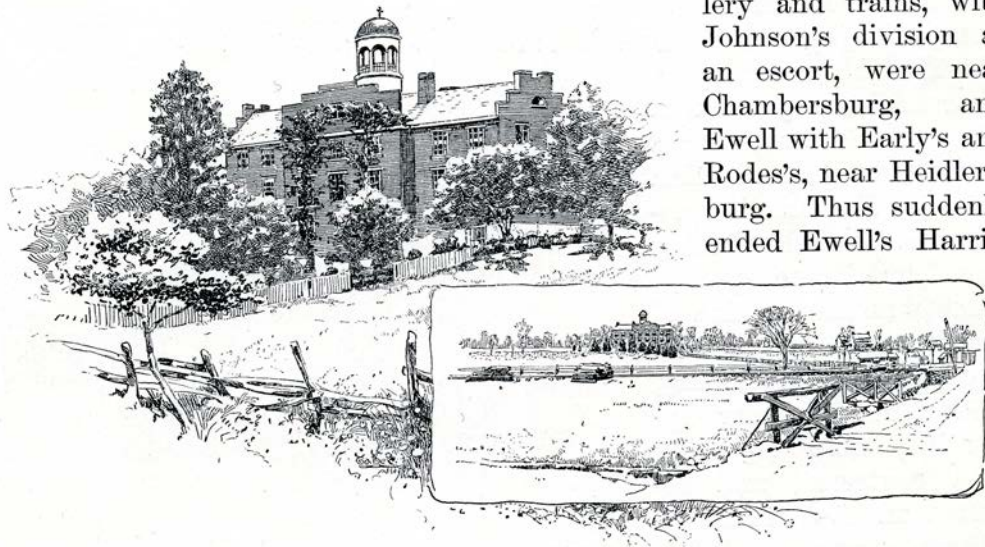
general by Point of Rocks, Fairfield, and Cashtown; and there should be represented on the maps the lesser range called Parr's Ridge, east of Pipe Creek, at the foot of which lie Westminster and Manchester.—EDITORS.



PENNSYLVANIA COLLEGE, GETTYSBURG. FROM A PHOTOGRAPH.

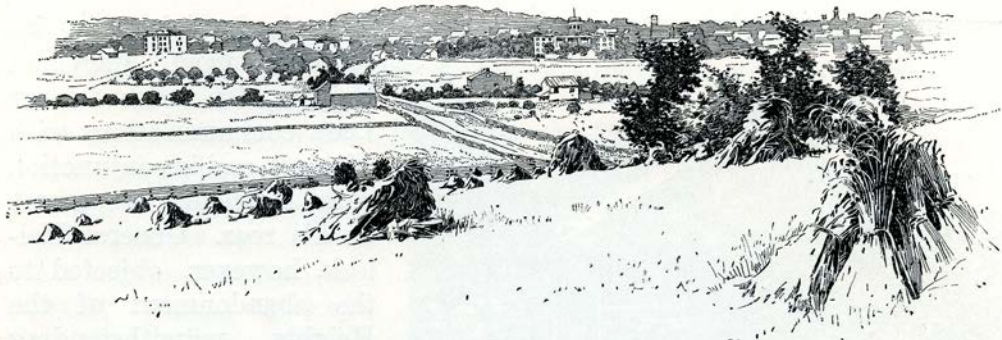
The cupola was first used by Union officers, and then by Confederate, as a station for observation and signals. During the withdrawal of the First and Eleventh corps through the town to Cemetery Hill, there was hard fighting in the college grounds.— EDITORS.

30th, his reserve artillery and trains, with Johnson's division as an escort, were near Chambersburg, and Ewell with Early's and Rodes's, near Heidlersburg. Thus suddenly ended Ewell's Harris-



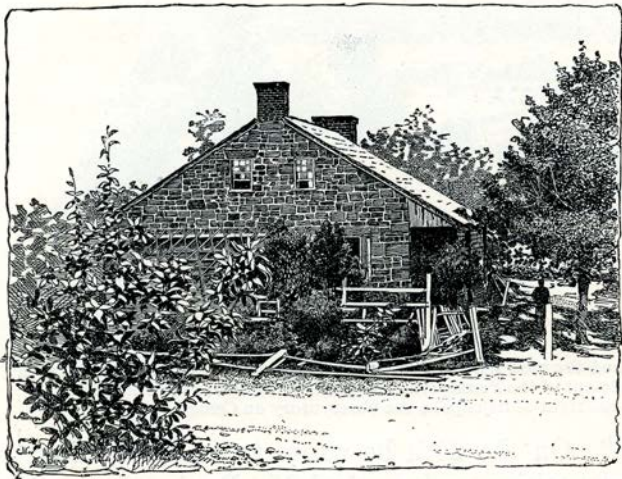
THE LUTHERAN SEMINARY. THE UPPER PICTURE FROM A WAR-TIME PHOTOGRAPH.

Both pictures show the face of the seminary toward the town, and in the right-hand view is seen the Chambersburg Pike. On the first day, Buford and Reynolds used the cupola for observations; thereafter it was the chief signal-station and observatory for the Confederates — EDITORS.



GETTYSBURG FROM OAK HILL. FROM A PHOTOGRAPH.

Oak Hill is a mile north-west of Gettysburg, and the view here is south-east, showing Stevens Hall (named after Thaddeus Stevens), the preparatory department of the Pennsylvania College on the left ; then Culp's Hill ; then Pennsylvania College, and, to the right of its cupola, the observatory on Cemetery Hill.

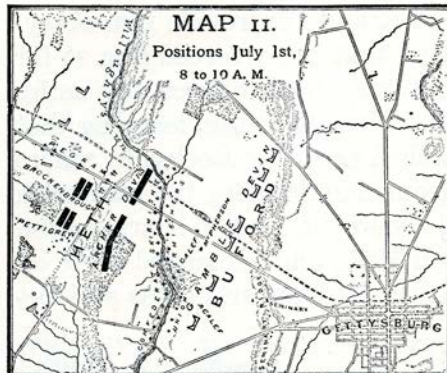


GENERAL LEE'S HEADQUARTERS ON THE CHAMBERSBURG PIKE.
FROM A WAR-TIME PHOTOGRAPH.

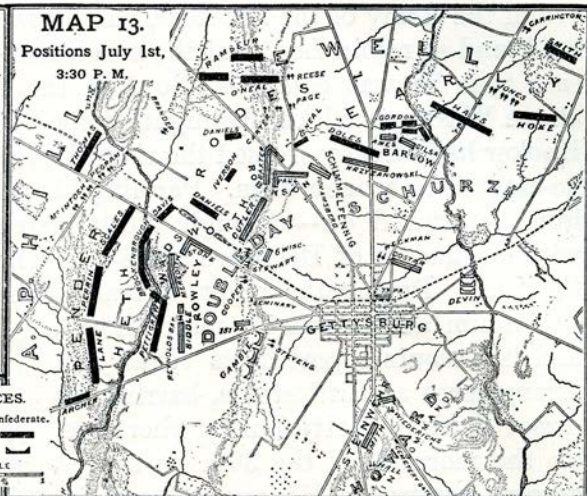


NORTH-EAST CORNER OF THE MCPHERSON WOODS,
WHERE GENERAL REYNOLDS WAS KILLED.
FROM A PHOTOGRAPH.

MAP II.

Positions July 1st,
8 to 10 A. M.

MAP 13.

Positions July 1st,
3:30 P. M.

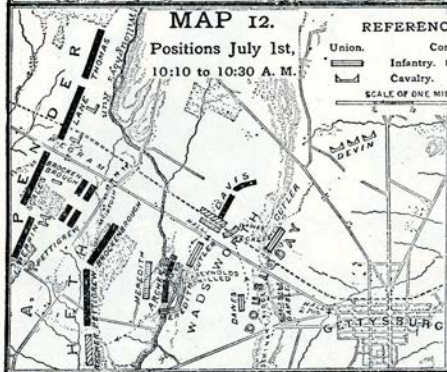
MAP 12.

Positions July 1st,
10:10 to 10:30 A. M.

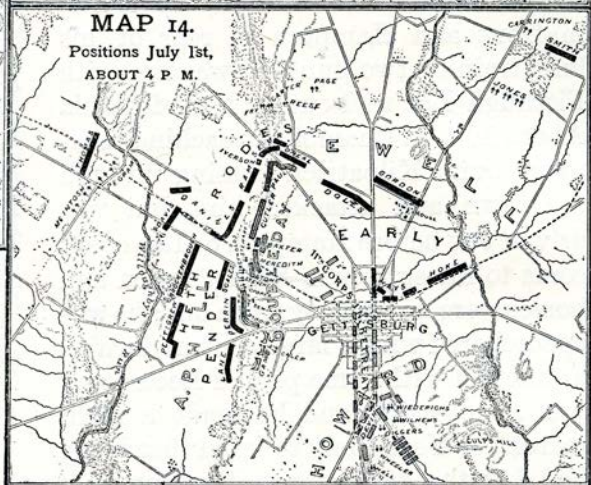
REFERENCES.

Union.	Confederate.
Infantry.	Cavalry.

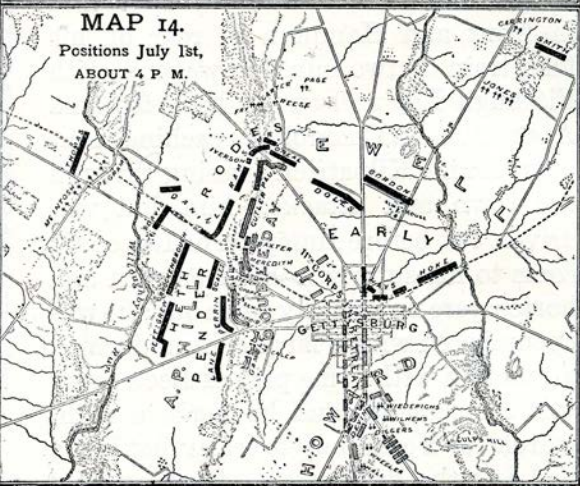
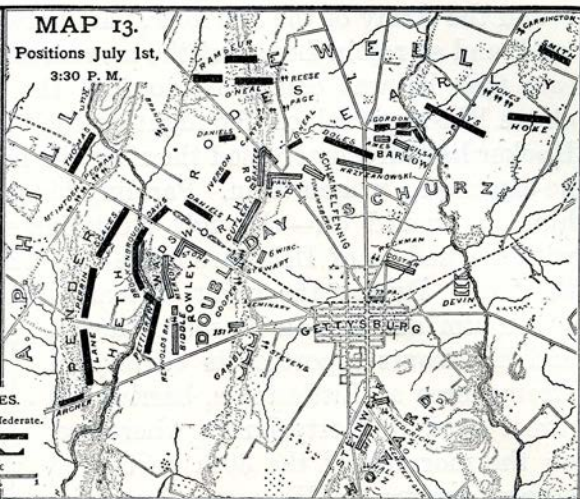
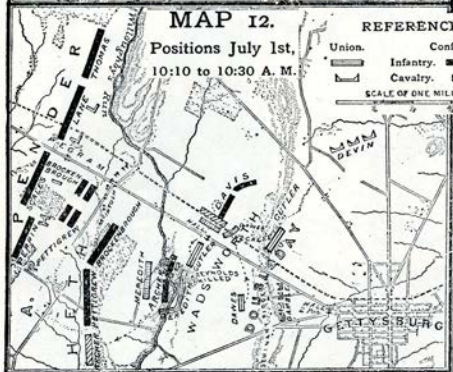
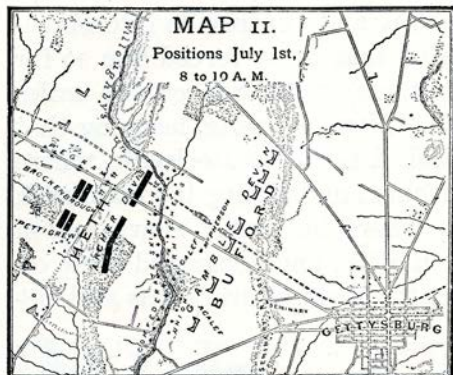
SCALE OF ONE MILE



MAP 14.

Positions July 1st,
ABOUT 4 P. M.

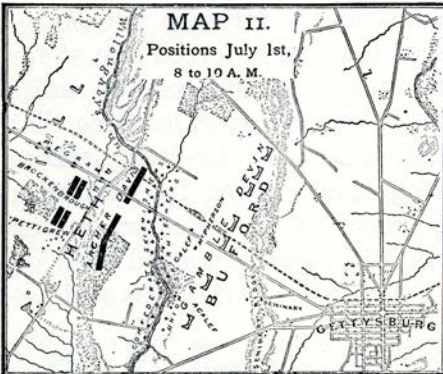
discovered the advance of a large Federal force and returned to Cashtown. Hill immediately notified Generals Lee and Ewell, informing the latter that he would advance next morning on Gettysburg.



discovered the advance of a large Federal force and returned to Cashtown. Hill immediately notified Generals Lee and Ewell, informing the latter that he would advance next morning on Gettysburg.

MAP II.

Positions July 1st,
8 to 10 A. M.



MAP II.

MAP 12.

**Positions July 1st,
10:10 to 10:30 A. M.**

REFERENCES

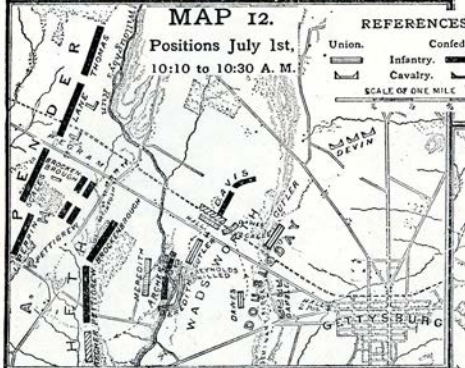
Union.

Confed=

Infantry.

Cavalry.

SCALE OF ONE MILE



MAP 13.

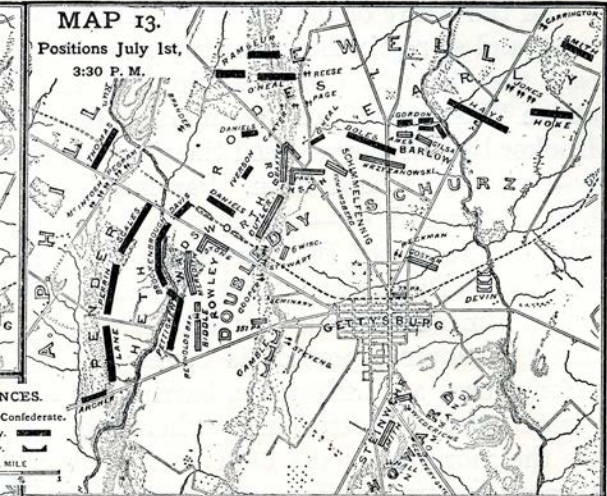
Positions July 1st,

3:30 P. M.

ANCES.

Confederate.

MILE



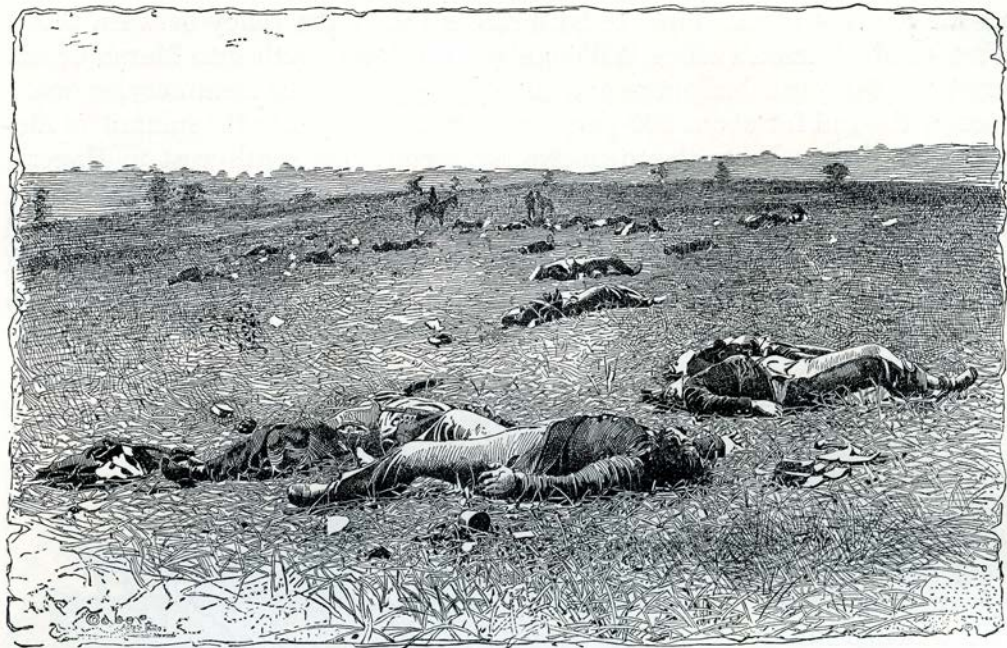
MAP 14.

Positions July 1st,
ABOUT 4 P. M.





CONFEDERATE DEAD ON THE FIELD OF THE FIRST DAY.
FROM A PHOTOGRAPH.



UNION DEAD WEST OF THE SEMINARY. FROM A PHOTOGRAPH.



UNION DEAD NEAR MCPHERSON'S WOODS. FROM A PHOTOGRAPH.



JOHN L. BURNS, "THE OLD HERO OF GETTYSBURG." }
FROM A PHOTOGRAPH TAKEN SOON AFTER
THE BATTLE.



MAJOR-GENERAL ABNER DOUBLEDAY.
FROM A PHOTOGRAPH.



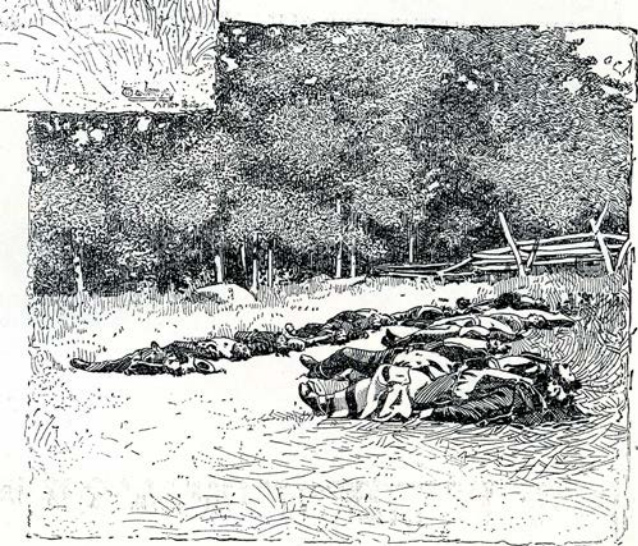
ASSAULT OF BROCKENBROUGH'S CONFEDERATE BRIGADE (HETH'S DIVISION) UPON THE STONE
BARN OF THE McPHERSON FARM.

The line of the stone barn was held by Stone's brigade, Pennsylvania Bucktails (Doubleday's division), its right resting on the Chambersburg pike (the left of the

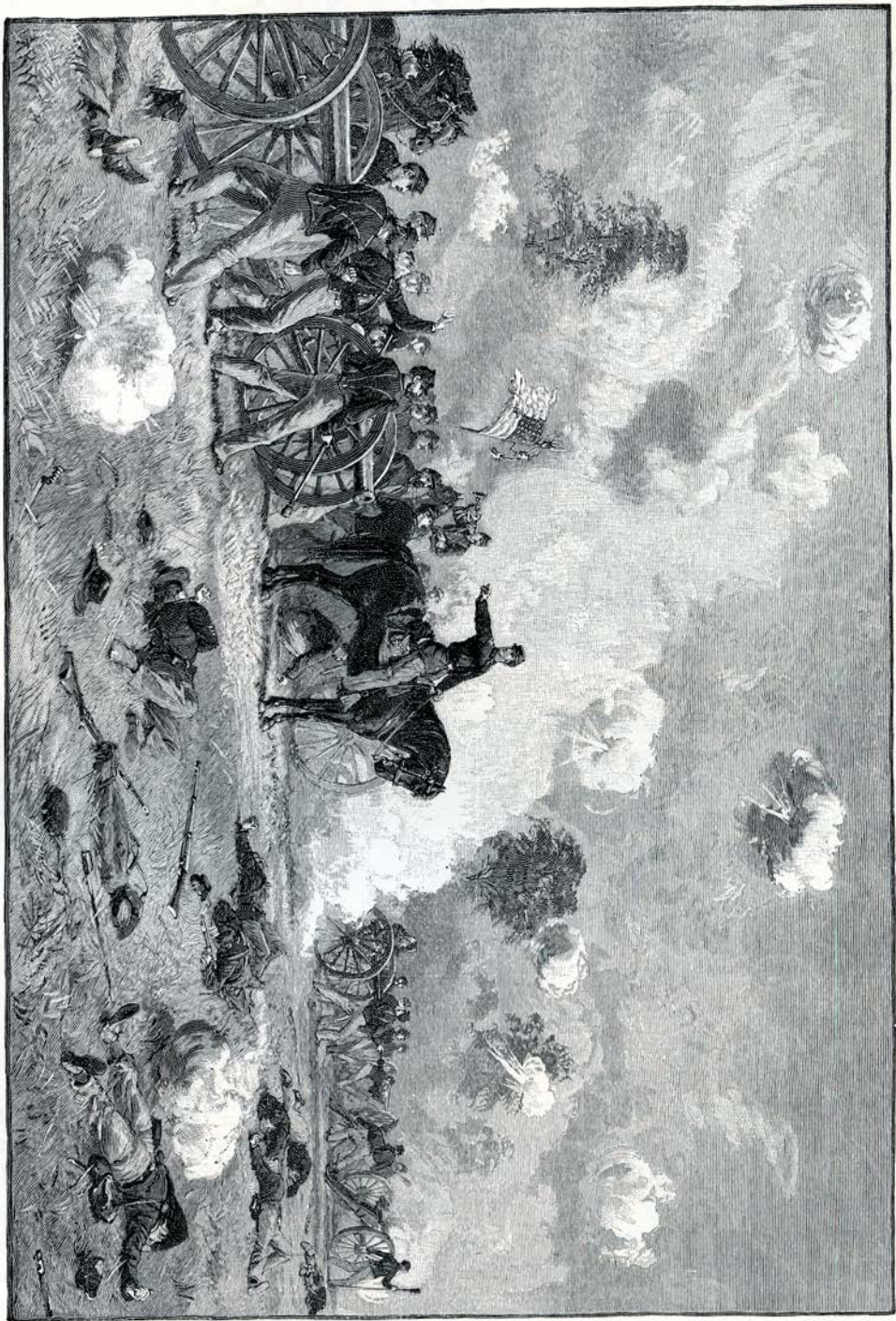
picture) and its left on the McPherson woods, where a part of Archer's Confederate brigade of Heth's division was captured by Meredith's brigade.—EDITORS.

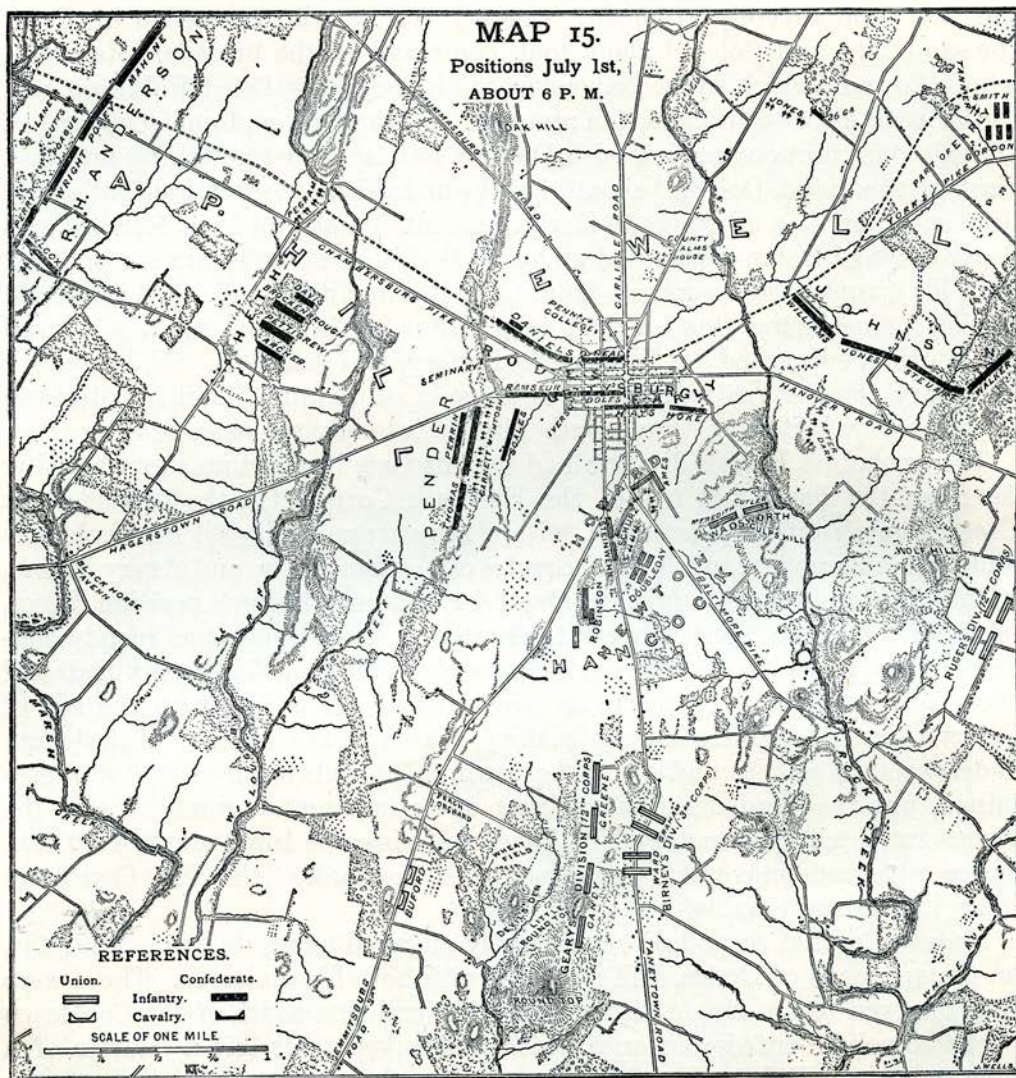


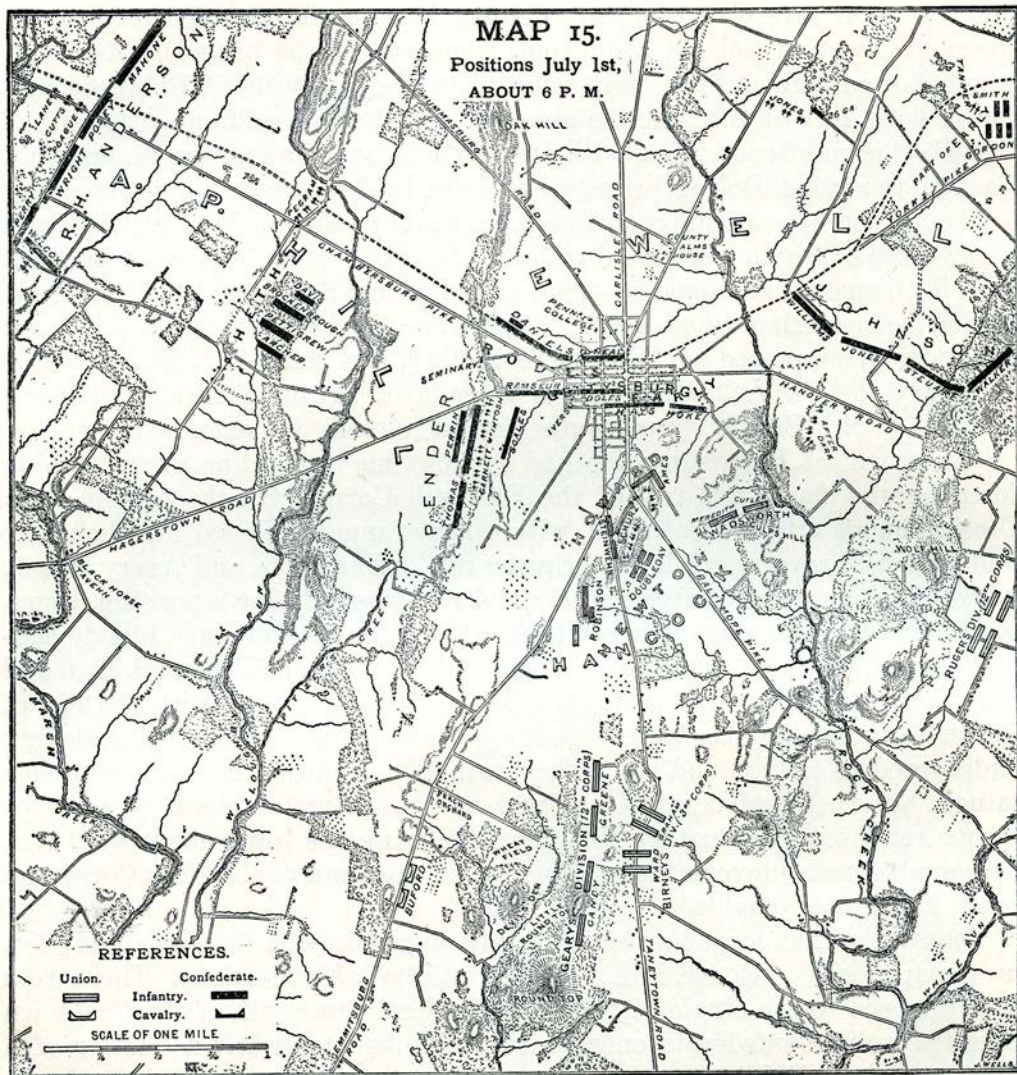
CONFEDERATE DEAD GATHERED FOR
BURIAL NEAR THE McPHERSON
WOODS. FROM PHOTOGRAPHS.

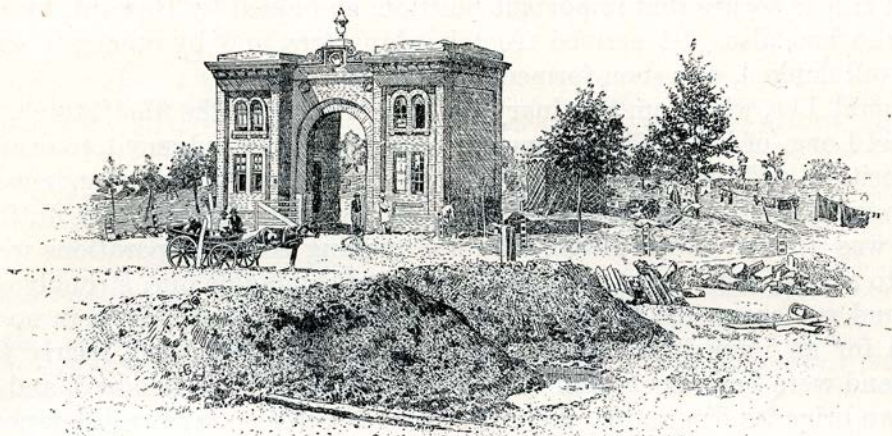


LIEUTENANT BAYARD WILKESON HOLDING HIS BATTERY (G, 4TH UNITED STATES ARTILLERY) TO ITS WORK IN AN EXPOSED POSITION.

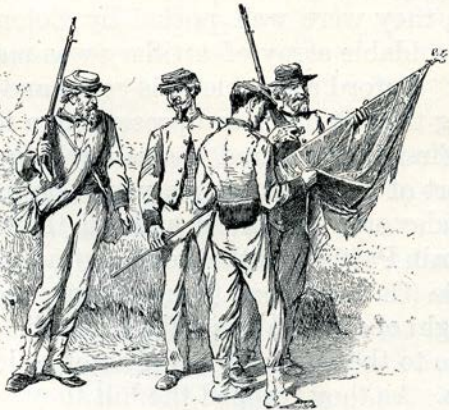








THE LINE OF DEFENSE AT THE CEMETERY GATE-HOUSE. FROM A PHOTOGRAPH.



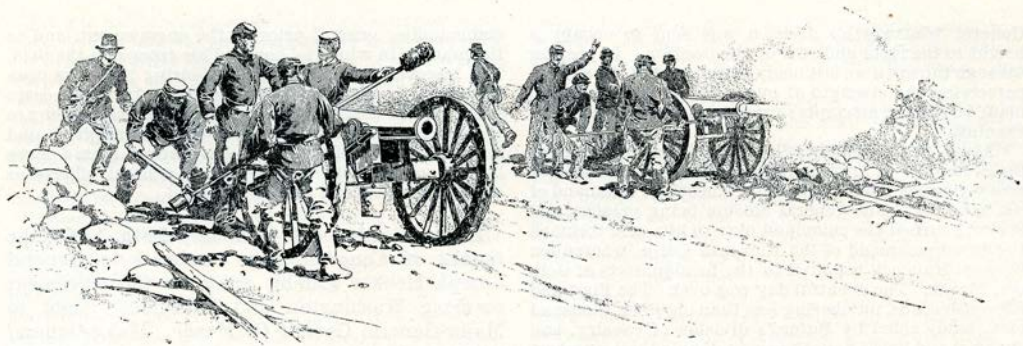
COUNTING THE SCARS IN THE COLORS.



FROM A PHOTOGRAPH TAKEN DURING THE WAR OR SOON AFTER.

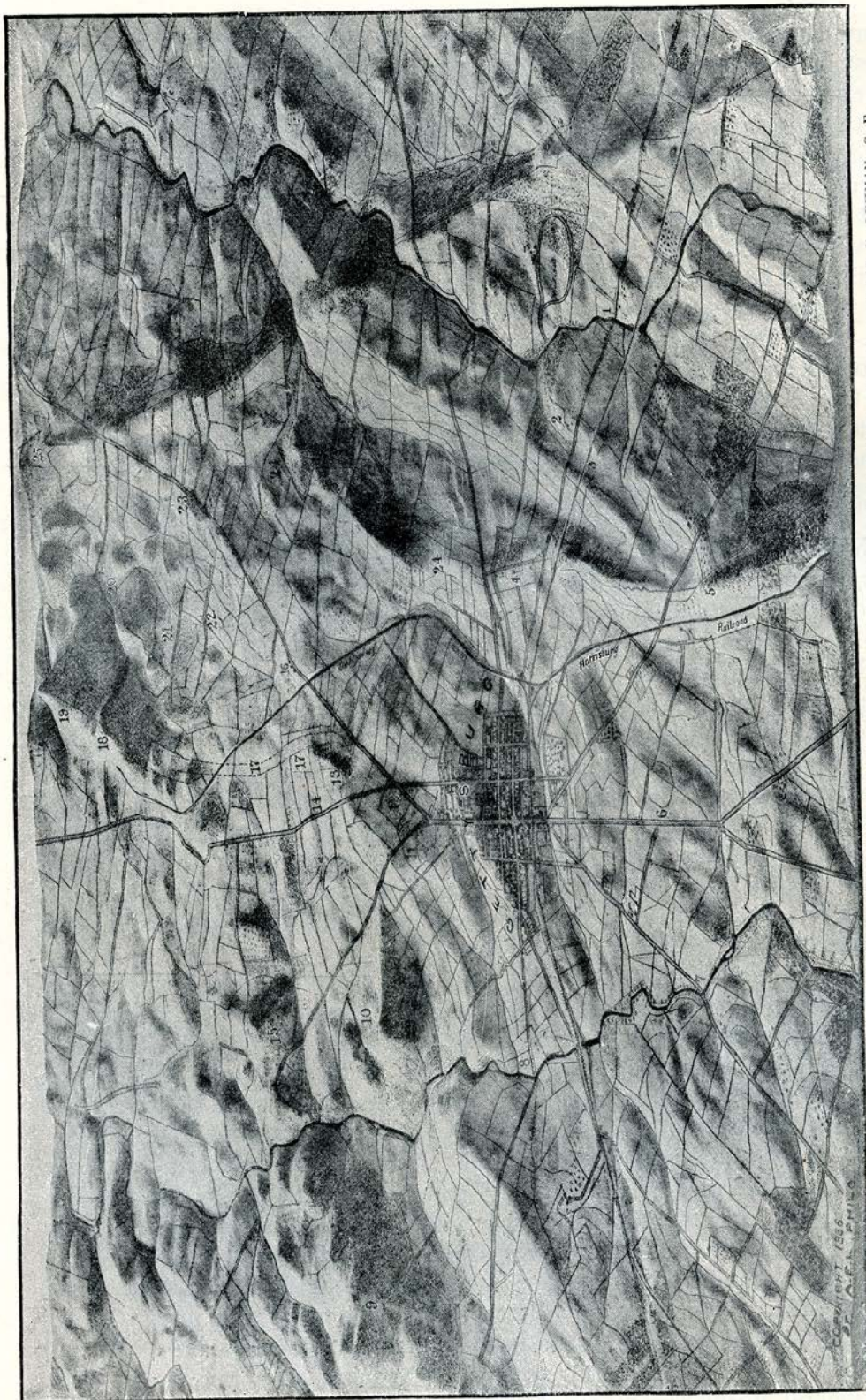
Mr. T. Hancock





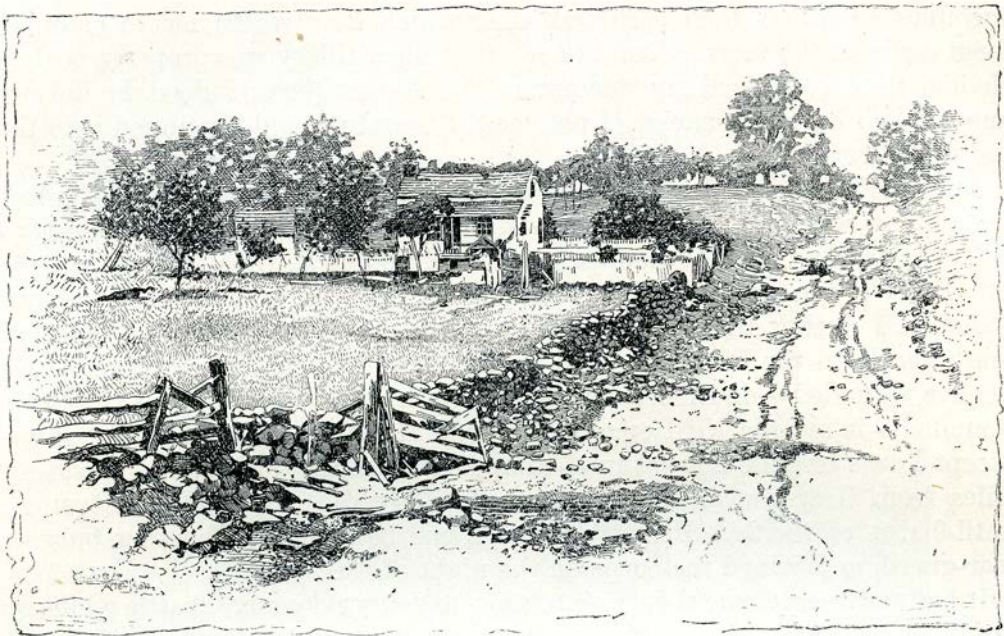
HALL'S BATTERY ON THE FIRST DAY RESISTING THE CONFEDERATE ADVANCE ON THE CHAMBERSBURG ROAD.





RELIEF MAP OF THE BATTLE-FIELD OF GETTYSBURG, LOOKING SOUTH. FROM A PHOTOGRAPH OF A RELIEF MAP BY AMBROSE E. LEHMAN, C. E.

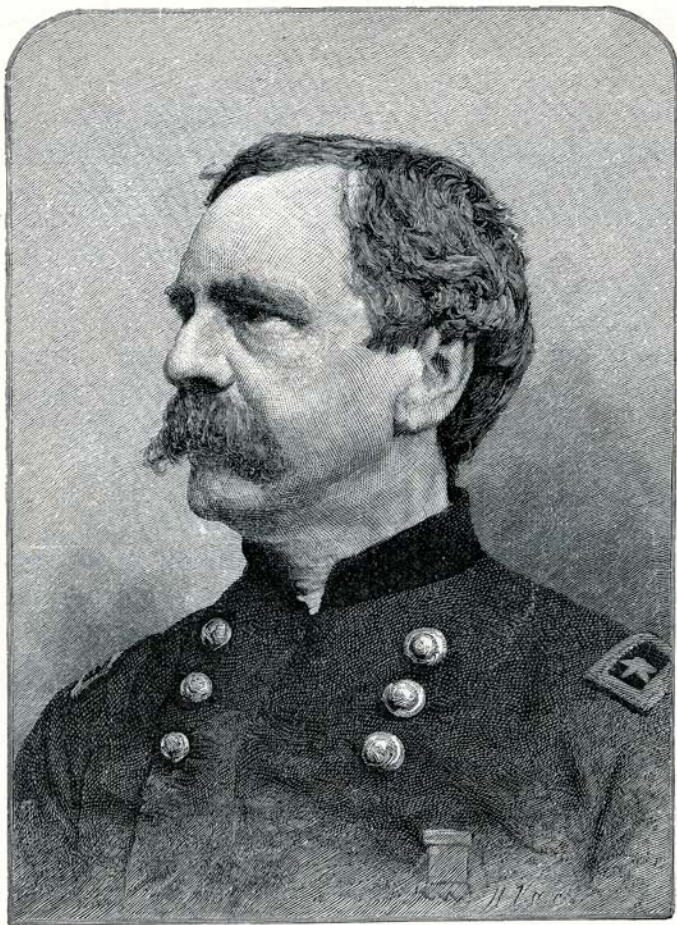
1. Chambersburg pike bridge over Willowby Creek — beginning of the battle of the first day. 2. McPherson's farm and woods. 3. Railway cuts. 4. Seminary. 5. Oak Hill. 6. Carlisle Road. 7. Harrisburg Road bridge over Rock Creek. 8. Hanover Road. 9. Wolf Hill. 10. Culp's Hill. 11. East Cemetery Hill. 12. Cemetery Hill. 13. Ziegler's Grove. 14. Meade's headquarters on the Taney-town Road. 15. Slocum's headquarters on Power's Hill. 16. Codori's. 17. Cemetery Ridge. 18. Little Round Top. 19. Round Top. 20. Devil's Den. 21. Wheat-field. 22. Trostle's farm. 23. Peach Orchard. 24. Seminary Ridge. 19 to 25. About extreme right of Longstreet's line.



GENERAL MEADE'S HEADQUARTERS ON THE TANEYTOWN ROAD. FROM A WAR-TIME PHOTOGRAPH.

General Meade arrived at Cemetery Hill at one o'clock in the morning of July 2d, and after daylight established his headquarters in a small farm-house on the Taneytown road, little more than an eighth of a mile east of Hancock's line of battle, which was the Union center. In the afternoon of July 2d, headquarters be-

came the target of a heavy artillery fire which caused a scattering of officers and staffs and the headquarters signal corps. During the terrific cannonade which preceded Pickett's charge on July 3d, Meade's headquarters received a still greater storm of shot and shell, with the same result.—EDITORS.



MAJOR-GENERAL DANIEL E. SICKLES. FROM A WAR-TIME PHOTOGRAPH.

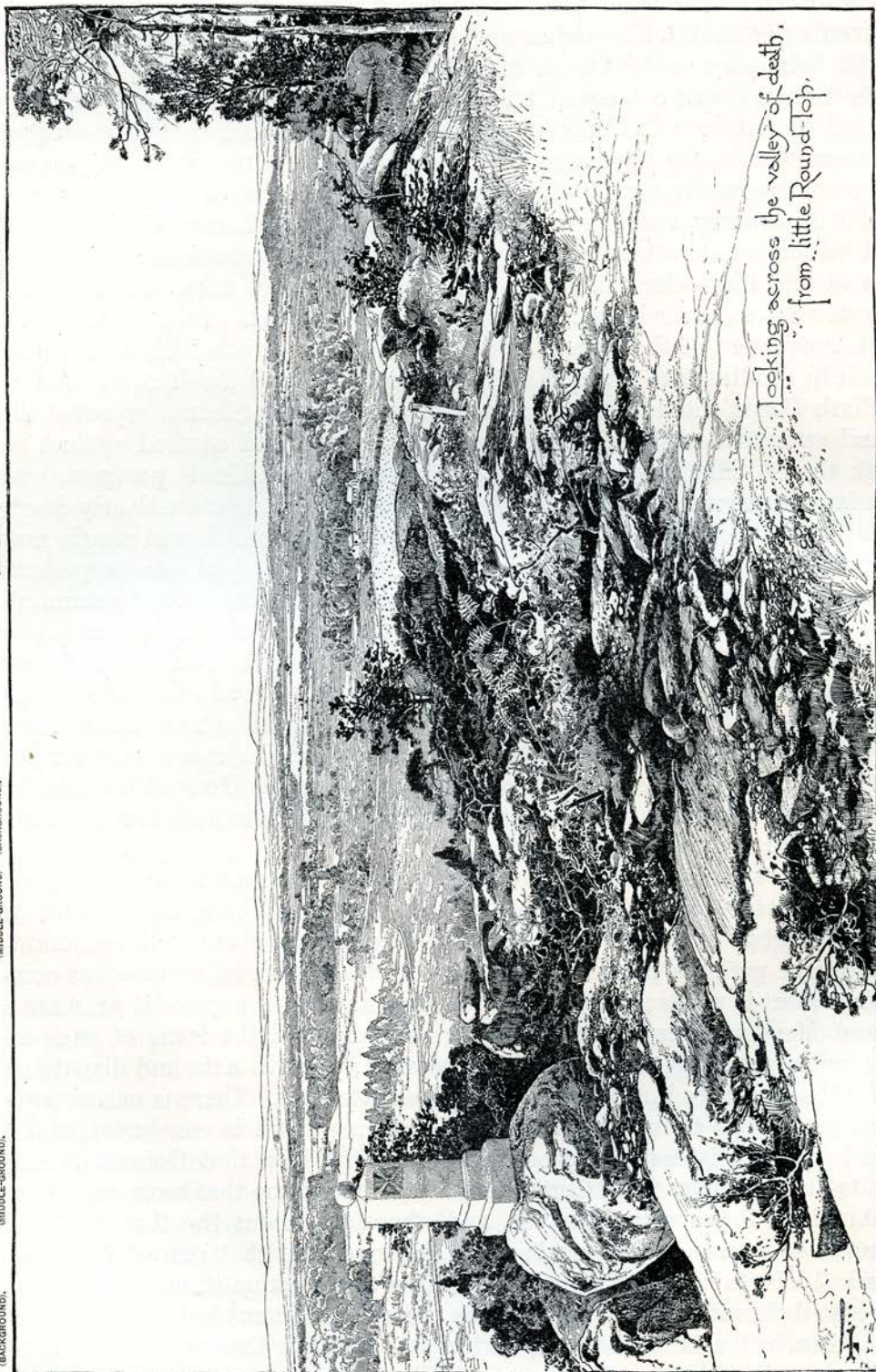
CEMETERY HILL
(BACKGROUND).

CODORI'S
(BACKGROUND).

TROSTLE'S
(MIDDLE-GROUND).

WHEAT-FIELD
(MIDDLE-GROUND).

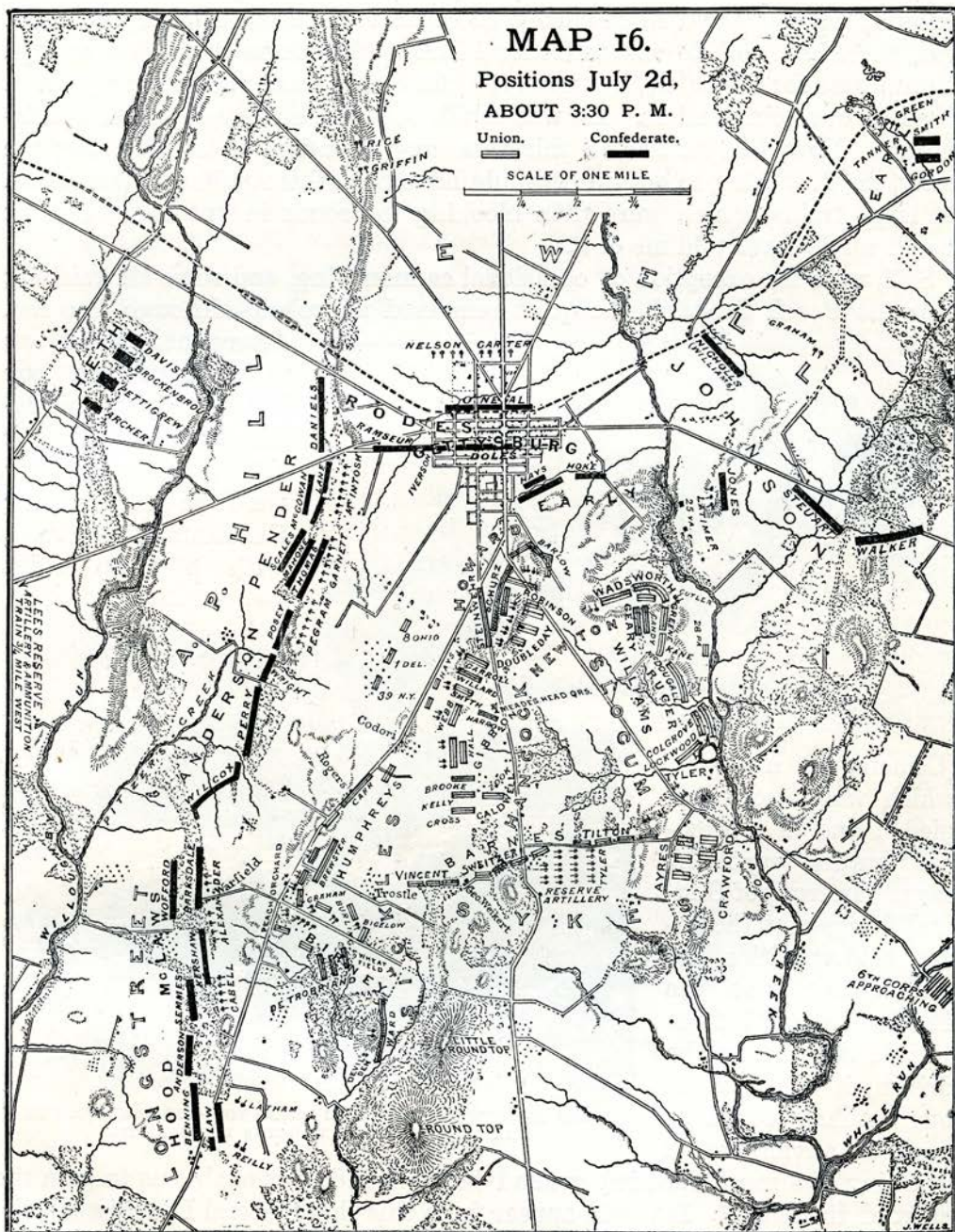
PEACH ORCHARD
(BACKGROUND).



Looking across the valley of death,
from Little Round-Top.

VIEW FROM THE POSITION OF HAZETT'S BATTERY ON LITTLE ROUND TOP. FROM PHOTOGRAPHS.

The monument marks the position of the 91st Pennsylvania of Weed's brigade [see p. 315]. The Emmitsburg road passes the Peach Orchard, Rogers's, and Codori's; the latter's buildings broke the center of Pickett's lines as they charged upon the ridge between Cemetery Hill and Little Round Top.—EDITORS.



time that I was called upon to meet deficiencies under such circumstances, and I was, therefore, prepared for this, having directed General Tyler, commanding the Artillery Reserve, whatever else he might leave behind, to bring up every round of ammunition in his trains, and I knew he would not fail me. Moreover, I had previously, on my own responsibility, and unknown to General Hooker, formed a special ammunition column attached to the Artillery Reserve, carrying twenty rounds per gun, over and above the authorized





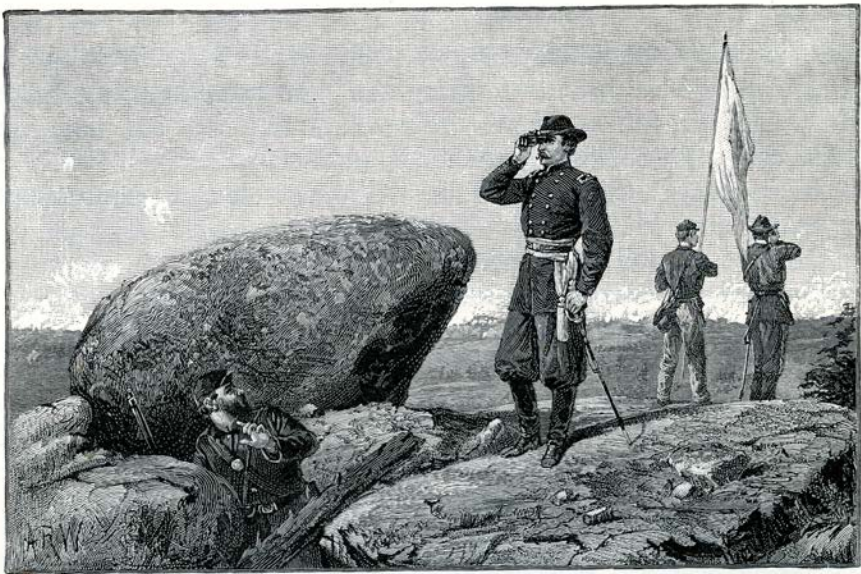
UNION BREASTWORKS ON LITTLE ROUND TOP—BIG ROUND TOP IN THE DISTANCE. FROM WAR-TIME PHOTOGRAPHS.



COLONEL EDWARD E. CROSS, COMMANDING THE FIRST
BRIGADE OF CALDWELL'S DIVISION, KILLED NEAR
DEVIL'S DEN, JULY 2. FROM A PHOTOGRAPH.



WEED'S POSITION ON LITTLE ROUND TOP, LOOKING IN THE DIRECTION
OF THE PEACH ORCHARD. FROM A WAR-TIME SKETCH.



GENERAL G. K. WARREN AT THE SIGNAL STATION ON LITTLE ROUND TOP.
FROM A SKETCH MADE AT THE TIME.



BRIGADIER-GENERAL STRONG VINCENT, MORTALLY
WOUNDED, JULY 2, IN THE STRUGGLE FOR THE
ROUND TOPS. FROM A PHOTOGRAPH.



**BRIGADIER-GENERAL STEPHEN H. WEED, COMMAND-
ING THE THIRD BRIGADE OF AYRES'S DIVISION,
KILLED JULY 2. FROM A PHOTOGRAPH.**

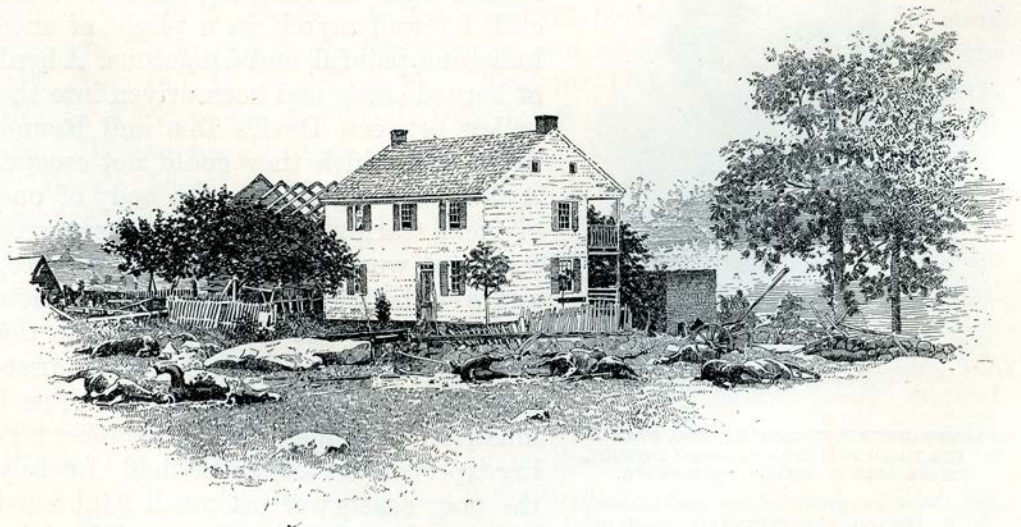
**General Weed was picked off by sharp-shooters at
Devil's Den soon after getting his brigade in
position on Little Round Top.—EDITORS.**



**BRIGADIER-GENERAL STEPHEN H. WEED, COMMAND-
ING THE THIRD BRIGADE OF AYRES'S DIVISION,
KILLED JULY 2. FROM A PHOTOGRAPH.**



TROSTLE'S FARM, THE SCENE OF THE FIGHTING BY BIGELOW'S NINTH MASSACHUSETTS BATTERY.
FROM A WAR-TIME PHOTOGRAPH.



TROSTLE'S HOUSE, SCENE OF THE FIGHTING OF BIGELOW'S BATTERY. FROM A WAR-TIME PHOTOGRAPH.



MONUMENT OF BIGELOW'S NINTH MASSACHUSETTS
BATTERY. FROM A PHOTOGRAPH TAKEN IN 1886.

MAP 17.

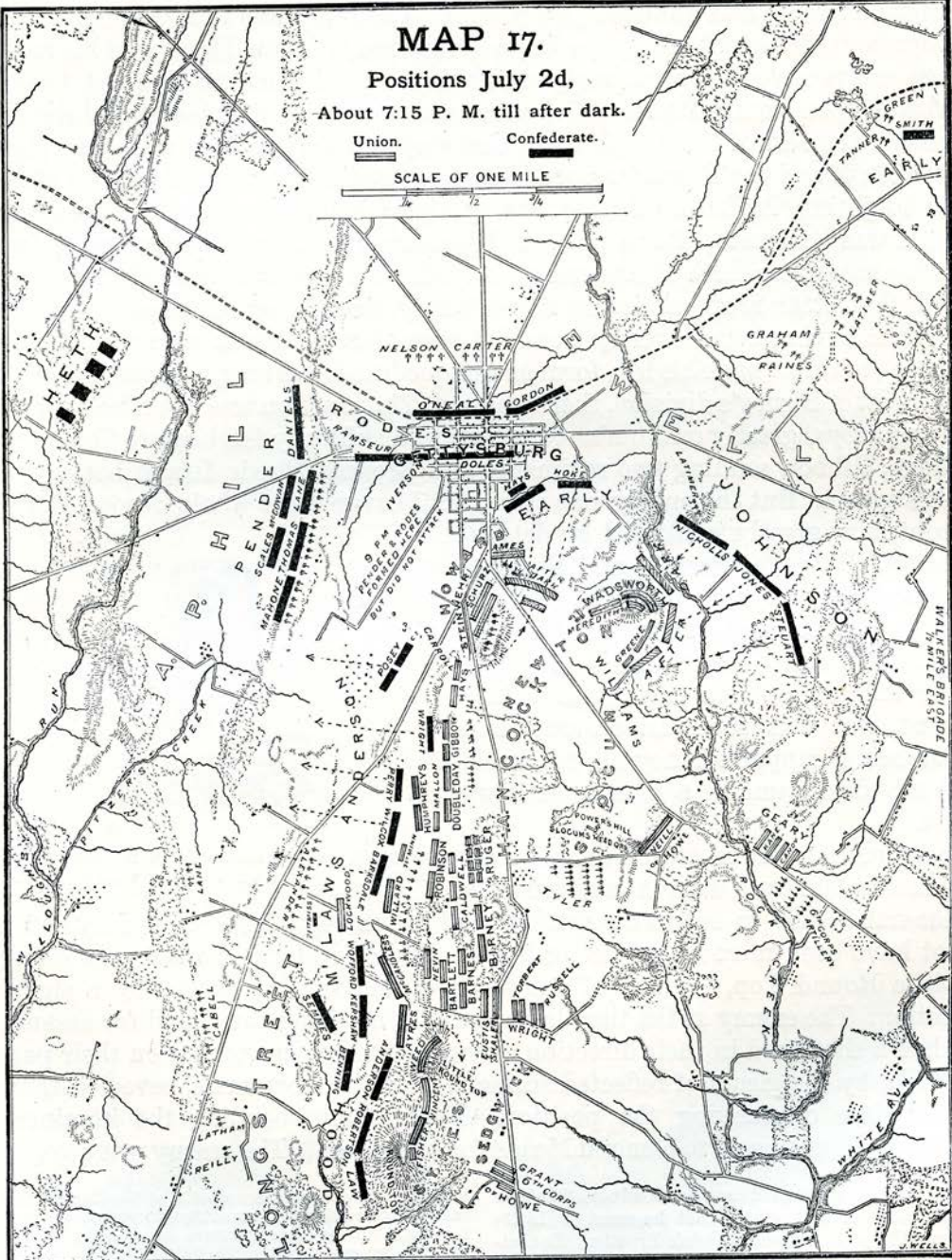
Positions July 2d,

About 7:15 P. M. till after dark.

Union.

Confederate.

SCALE OF ONE MILE



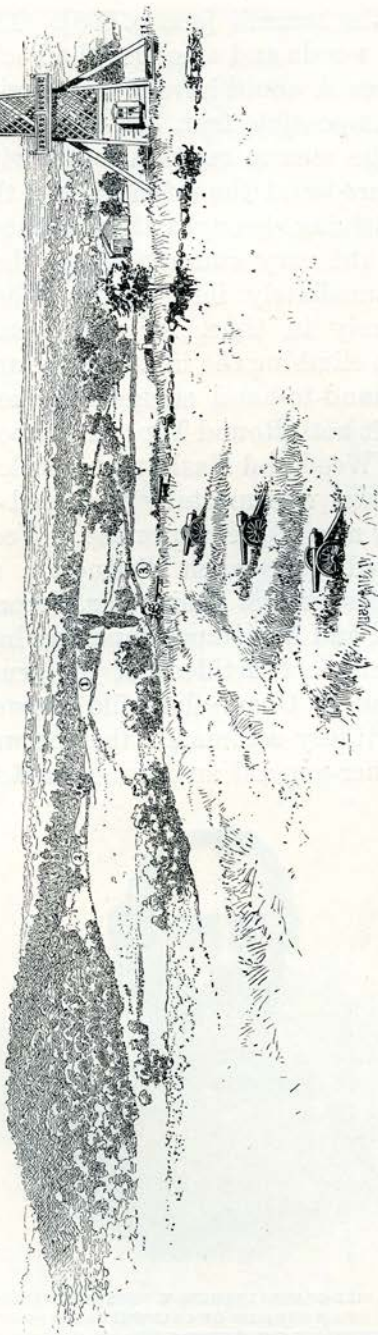


COLONEL GEORGE L. WILLARD, COMMANDING THE
THIRD BRIGADE OF HAYS'S DIVISION, KILLED
ON JULY 2. FROM A PHOTOGRAPH.



BRIGADIER-GENERAL SAMUEL K. ZOOK, COMMANDING
THE THIRD BRIGADE OF CALDWELL'S DIVISION,
KILLED IN THE "WHEAT-FIELD" JULY 2.
FROM A PHOTOGRAPH.

CULP'S HILL.



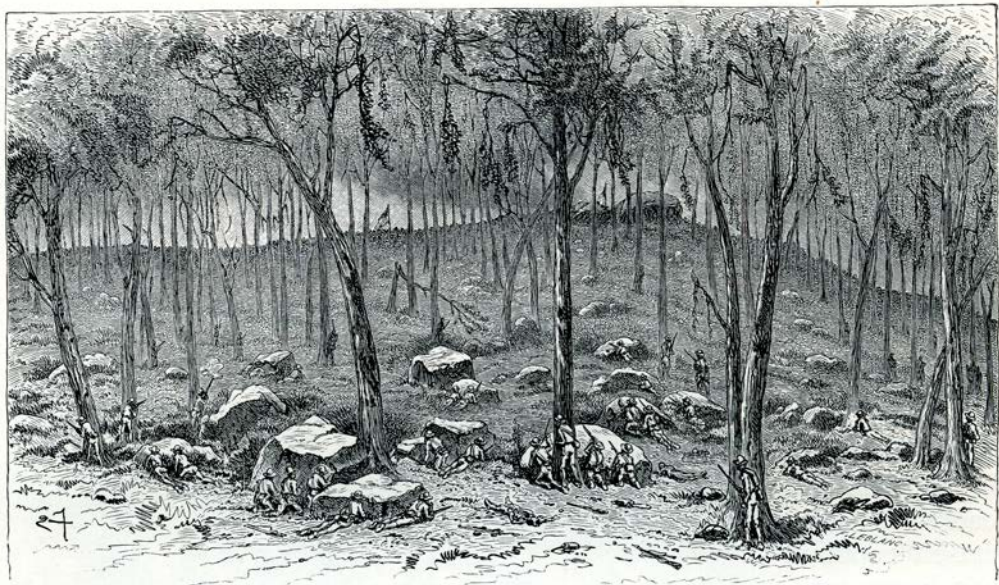
VIEW OF CULP'S HILL FROM THE POSITION OF THE BATTERIES NEAR THE CEMETERY GATE. FROM PHOTOGRAPHS.

1. Position of Stevens's 5th Maine Battery which enflamed Early's division in the charge upon East Cemetery Hill. 2. Left of the line of field-works on Culp's Hill. 3. Position of the 33d Massachusetts behind the fence of a lane where the left of the Confederate charge was repulsed.—EDITORS.



J.T.26

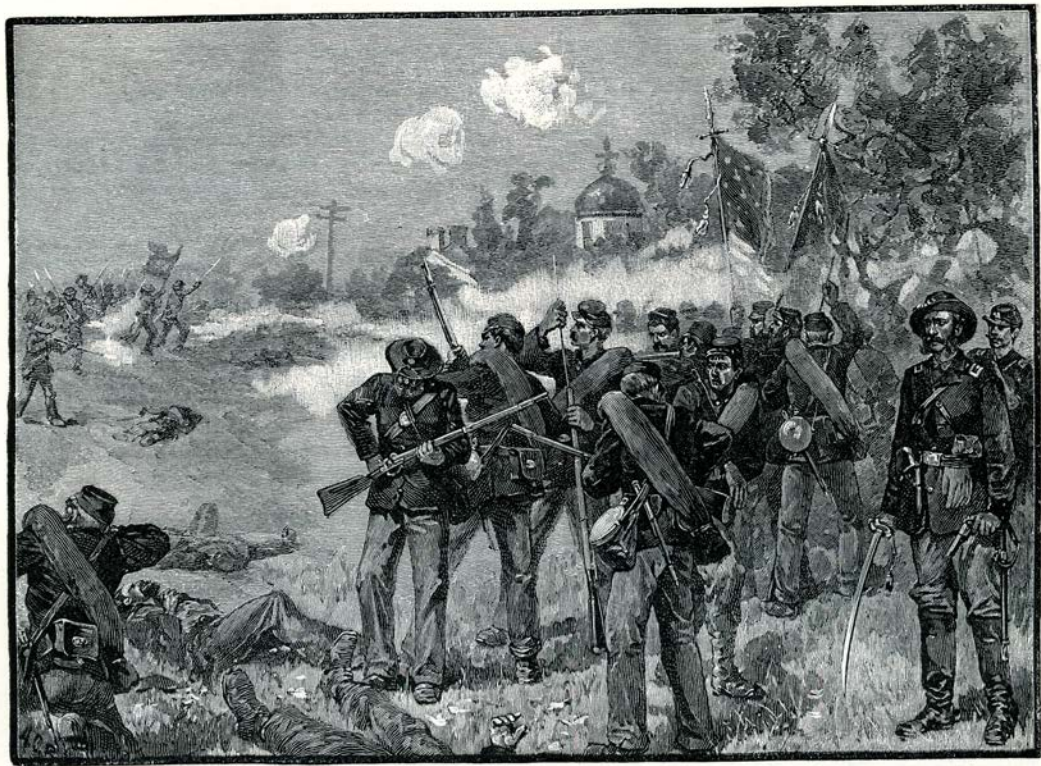
EARLY'S CHARGE ON THE EVENING OF JULY 2 UPON EAST CEMETERY HILL.



CONFEDERATE SKIRMISHERS AT THE FOOT OF CULP'S HILL.



UNIFORM OF THE 146TH NEW
YORK REGIMENT.



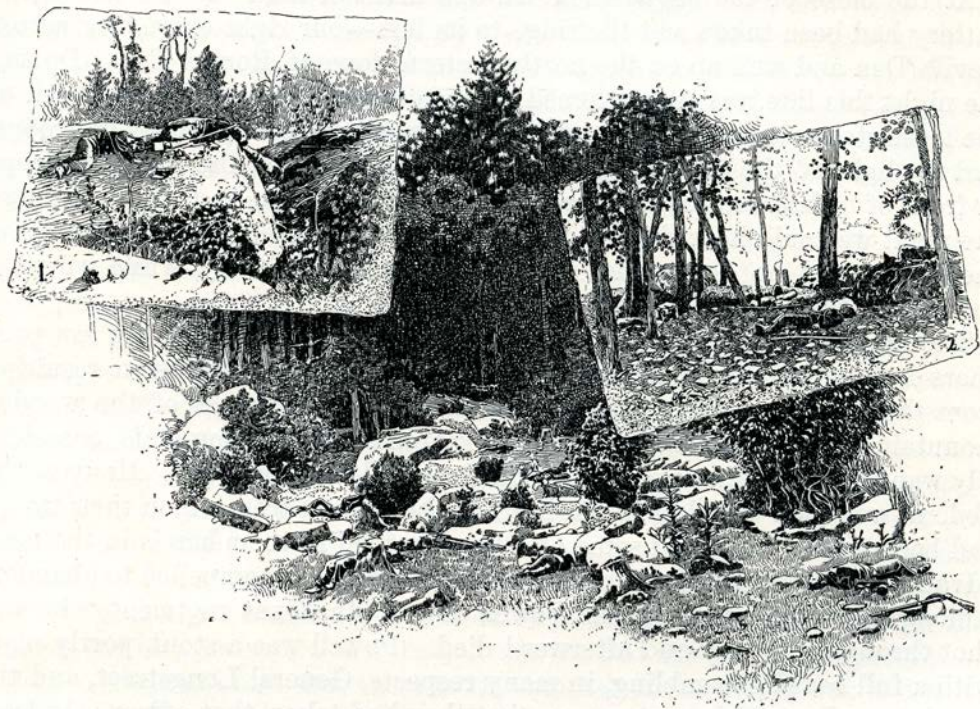
AT CLOSE QUARTERS ON THE FIRST DAY AT GETTYSBURG.



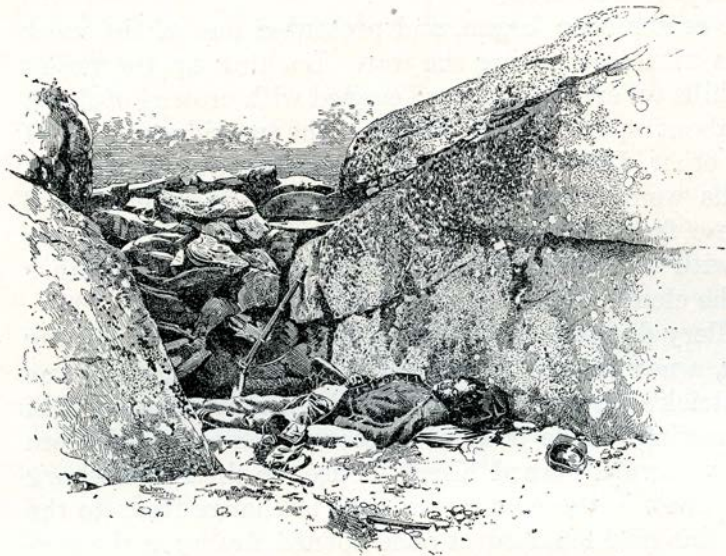
BREVET MAJOR-GENERAL HENRY J. HUNT, CHIEF OF
ARTILLERY OF THE ARMY OF THE POTOMAC.
FROM A PHOTOGRAPH.



THE STRUGGLE FOR DEVIL'S DEN, (LOOKING TOWARD THE CONFEDERATE LINES). FROM A WAR-TIME SKETCH.



THE "SLAUGHTER PEN" AT THE BASE AND ON THE LEFT SLOPE OF LITTLE ROUND TOP. FROM PHOTOGRAPHS.



DEAD CONFEDERATE SHARP-SHOOTER IN THE DEVIL'S DEN.
FROM A PHOTOGRAPH.



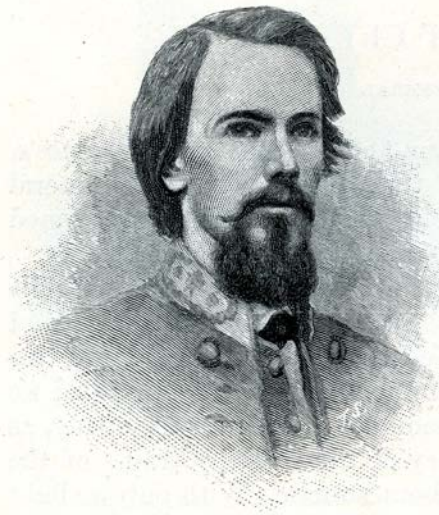
**BRIGADIER-GENERAL WILLIAM N. PENDLETON,
C. S. A., LEE'S CHIEF OF ARTILLERY.
FROM A PHOTOGRAPH.**



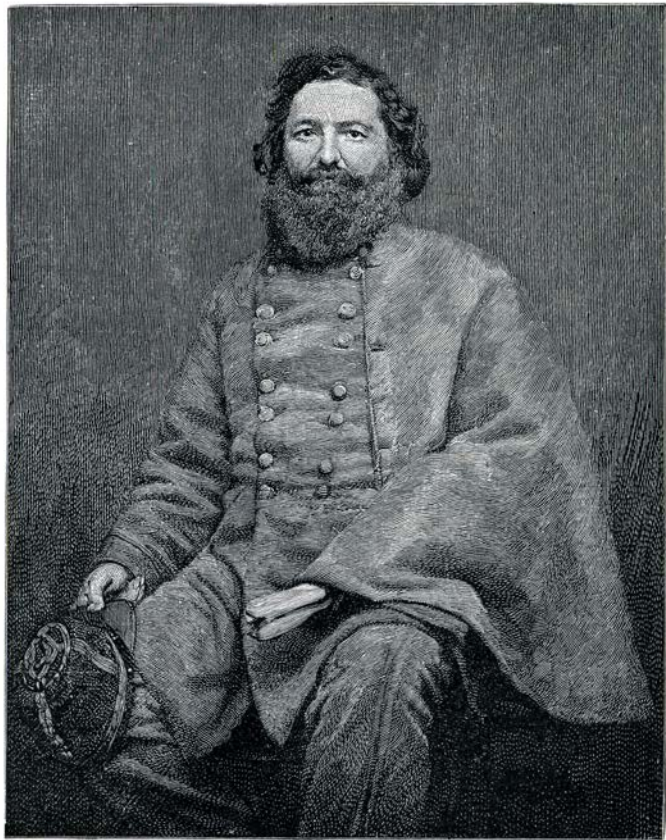
MAJOR-GENERAL J. B. KERSHAW, C. S. A.
FROM A PHOTOGRAPH.



DEVIL'S DEN, FACING LITTLE ROUND TOP.



MAJOR-GENERAL E. M. LAW, C. S. A.
FROM A PHOTOGRAPH.



MAJOR-GENERAL LAFAYETTE MCLAWS, C. S. A. FROM A PHOTOGRAPH.

ROUND TOPS.

PEACH ORCHARD.



SICKLES'S POSITION AT THE PEACH ORCHARD, VIEWED FROM THE EMMITSBURG ROAD, LOOKING SOUTH.

This and the other outline sketches were made in 1885 by C. W. Reed, of Bigelow's 9th Mass. Battery.

ROSE'S HOUSE.



THE "WHEAT-FIELD," LOOKING TOWARD KERSHAW'S POSITION IN FRONT OF ROSE'S HOUSE.

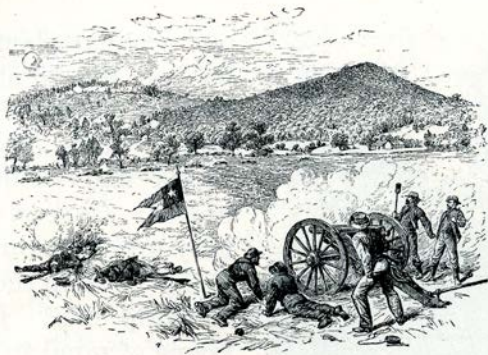
CONFEDERATES MOVING
ABOUT DEVIL'S DEN.

PEACH ORCHARD.

POSITION OF CLARK'S, PHILLIPS'S
AND BIGELOW'S BATTERIES.



SICKLES'S ANGLE AT THE PEACH ORCHARD, AS SEEN FROM THE ROAD LEADING FROM THE
WHEAT-FIELD TO THE PEACH ORCHARD.



THE LAST CONFEDERATE GUN AT GETTYSBURG—ON LONGSTREET'S RIGHT, OPPOSITE ROUND TOP.



LUTHERAN CHURCH ON CHAMBERSBURG STREET,
GETTYSBURG, USED AS A HOSPITAL.
FROM A PHOTOGRAPH.



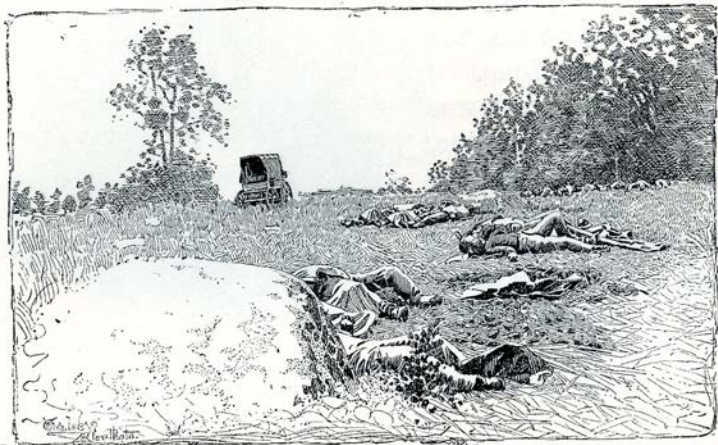
**BRIGADIER-GENERAL PAUL SEMMES, C. S. A.,
MORTALLY WOUNDED, JULY 2.
FROM A PHOTOGRAPH.**



**BRIGADIER-GENERAL WILLIAM BARKSDALE, C. S. A.,
WOUNDED JULY 2, DIED JULY 3.
FROM A PHOTOGRAPH.**



DEAD IN THE "WHEAT-FIELD" GATHERED FOR
BURIAL. FROM PHOTOGRAPHS.





MAP 18.

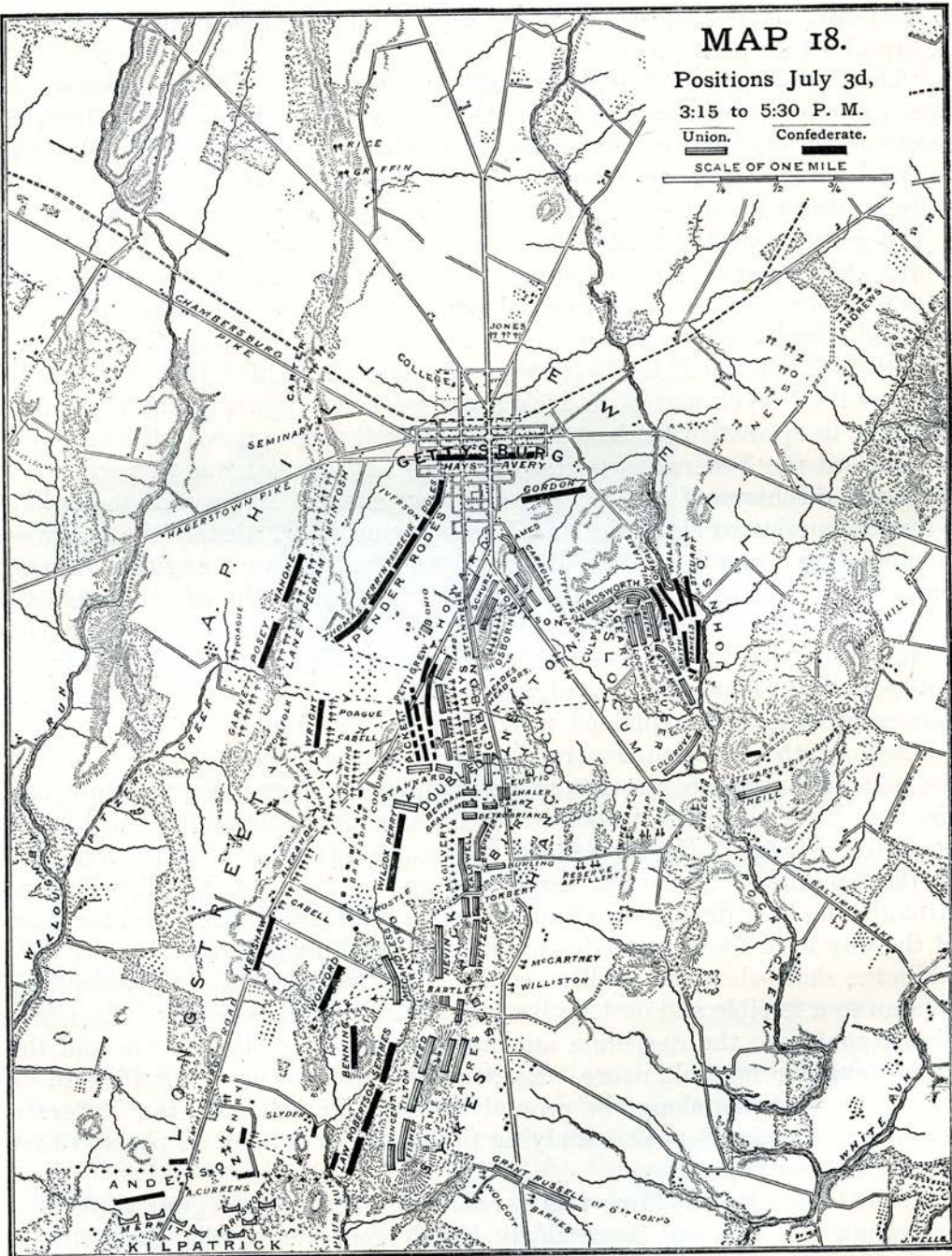
Positions July 3d,

3:15 to 5:30 P. M.

Union.

Confederate.

SCALE OF ONE MILE





MAJOR-GENERAL WILLIAM D. PENDER,
WOUNDED JULY 2, DIED JULY 18.
FROM A PHOTOGRAPH.

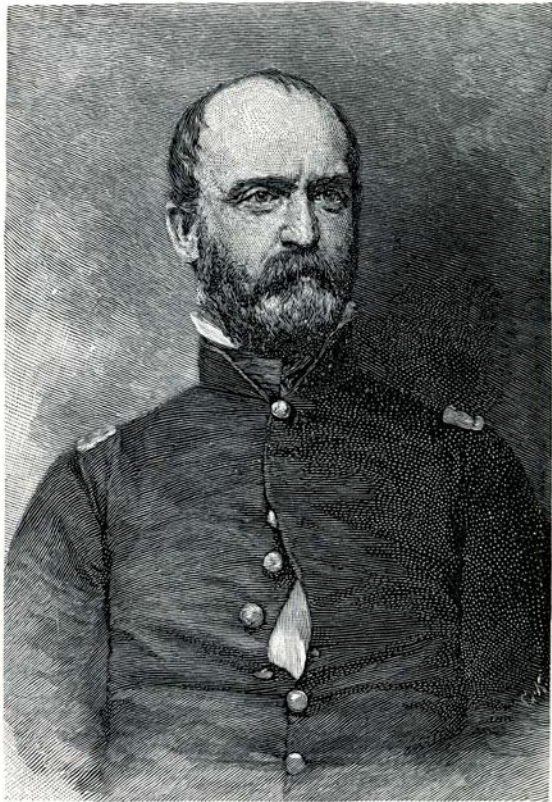


ROUND TOPS.

CLUMP OF TREES.

CEMETERY HILL.

PROFILE OF CEMETERY RIDGE AS SEEN FROM PICKETT'S POSITION BEFORE THE CHARGE.



BRIGADIER-GENERAL LEWIS A. ARMISTEAD, C. S. A.,
KILLED JULY 3. FROM A PHOTOGRAPH.



THE CHARGE OF PICKETT, PETTIGREW, AND TRIMBLE. FROM A WAR-TIME SKETCH FROM THE UNION POSITION.



MAJOR-GENERAL GEORGE E. PICKETT, C. S. A. FROM A PHOTOGRAPH.



CHARGE OF
ALEXANDER'S ARTILLERY.
SEE PAGE 360.



CONFEDERATE ARTILLERY AT DINNER.



CONFEDERATES WAITING FOR THE END OF THE ARTILLERY DUEL.



MAJOR-GENERAL CADMUS M. WILCOX, C. S. A.
FROM A PHOTOGRAPH.